

ITEC107 MIDTERM SAMPLE REVIEW QUESTIONS

True/False

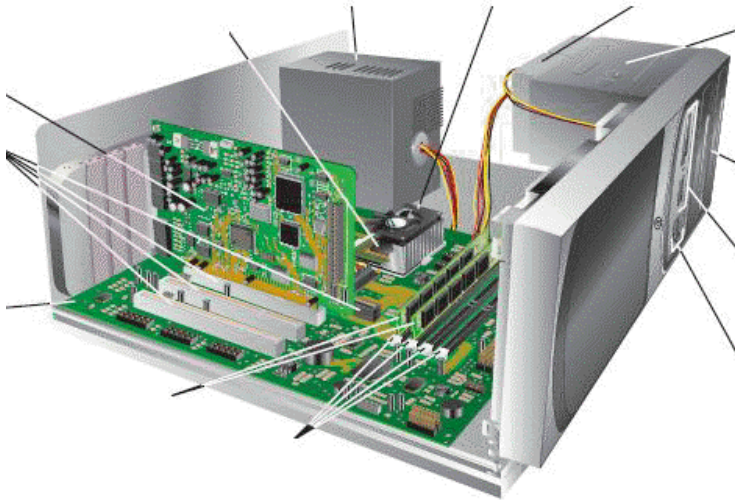
Indicate whether the statement is true or false.

- ___ 1. Notebook computers (also called laptops) are fully functioning computers that open to reveal a screen and keyboard.
- ___ 2. Information processing is a vital activity today because the success of many businesses depends heavily on the wise use of information.
- ___ 3. The external hardware components are located inside the main box or system unit of the computer.
- ___ 4. Storage devices are hardware used to store data on or access data from storage media, such as CD discs, DVD discs, or flash memory cards.

Multiple Choice

Identify the choice that best completes the statement or answers the question.

- ___ 1. A(n) ___ is a medium-sized computer used to host programs and data for a small network.
 - a. mainframe computer
 - b. super server
 - c. midrange server
 - d. Internet server
- ___ 2. Two of the most common types of communications hardware are ___ and network adapters.
 - a. ports
 - b. slide rules
 - c. monitors
 - d. modems
- ___ 3. The term ___ refers to the programs or instructions used to tell the computer hardware what to do.
 - a. hardware
 - b. port
 - c. software
 - d. adapter
- ___ 4. A ___ is loosely defined as a very small device that has some built-in computing or Internet capability.
 - a. mainframe computer
 - b. midrange server
 - c. mobile device
 - d. personal computer

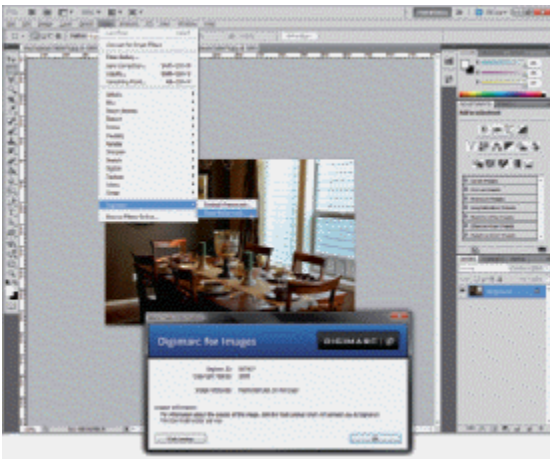


- ___ 5. When the term ___ is used alone, it refers to chip-based storage used by the computer—usually the amount of the computer’s main memory (called RAM), which is located inside the system unit (shown in the accompanying figure).
- | | |
|-----------|---------------|
| a. system | c. disc drive |
| b. memory | d. processor |
- ___ 6. ___ printers, like old ribbon typewriters, have a print mechanism that actually strikes the paper to transfer ink to the paper.
- | | |
|-----------|----------|
| a. Impact | c. Tap |
| b. Push | d. Click |
- ___ 7. Data stored on optical discs (such as ___) is read using laser beams.
- | | |
|---------|---------------------|
| a. CDs | c. Blu-ray Discs |
| b. DVDs | d. all of the above |



- ___ 8. As shown in the accompanying figure, the CPU, also called the ___ when talking about personal computers, does the vast majority of the processing for a computer.
- | | |
|-------------------|------------------|
| a. macroprocessor | c. RAM |
| b. microprocessor | d. Memory System |
- ___ 9. Most search sites use a ___—a software program—in conjunction with a huge database of information about Web pages to help visitors find Web pages that contain the information they are seeking.
- | | |
|-------------------|-----------------|
| a. search engine | c. search store |
| b. search toolbox | d. search box |

- ___ 10. The ___ is the most commonly used Internet search type.
- keyword search
 - character search
 - directory search
 - distributed search
- ___ 11. Online shopping and online investing are examples of ___.
- online merchandising
 - online marketing
 - e-commerce
 - e-trade
- ___ 12. Video content delivered at the user's request is called ___.
- video channel
 - video networking
 - video-on-demand
 - Video over Internet Protocol
- ___ 13. A(n) ___ is a form of protection available to the creator of an original artistic or literary work, such as a book, movie, software program, musical composition, or painting.
- trademark
 - copyright
 - patent
 - intellectual ownership right



- ___ 14. A ___ like the one used in the accompanying figure can be read with Adobe Photoshop or a proprietary reader.
- digital patent
 - digital watermark
 - digital copyright
 - digital trademark
- ___ 15. Presenting someone else's work as your own is referred to as ___, which is illegal and unethical.
- duplicating
 - printing
 - plagiarism
 - copying
- ___ 16. A condition known as ___ has been linked to the repetitive finger movements made when using a keyboard.
- ergonomics
 - carpal tunnel syndrome (CTS)
 - burnout
 - computer hand syndrome (CHS)
- ___ 17. Since all programs and data are accessed from and stored on the portable computer's storage hardware, a ___ or notebook stand lets you use the same computer at home and on the road, while still having a comfortable work environment at home.
- notebook holder
 - tablet PC stand
 - docking station
 - laptop station

- ___ 18. To prevent a sore or stiff neck, ___.
- use a footrest, if needed, to keep your feet flat on the floor
 - cover windows or adjust lighting to eliminate glare
 - rest and gently stretch your fingers and arms every 15 minutes or so
 - place the monitor directly in front of you



- ___ 19. The ___ nonprofit organization was created to design, manufacture, and distribute affordable laptop computers like the one in the accompanying figure to every child in the world in order to provide them with access to new channels of learning, sharing, and self-expression.
- OX
 - Simputer
 - OLPC
 - InternetWorld

SAMPLE REVIEW QUESTIONS -- ANSWER SECTION

TRUE/FALSE

- ANS: T PTS: 1
- ANS: T PTS: 1
- ANS: F PTS: 1
- ANS: T PTS: 1

MULTIPLE CHOICE

- | | | | |
|-----------|--------|------------|--------|
| 1. ANS: C | PTS: 1 | 10. ANS: A | PTS: 1 |
| 2. ANS: D | PTS: 1 | 11. ANS: C | PTS: 1 |
| 3. ANS: C | PTS: 1 | 12. ANS: C | PTS: 1 |
| 4. ANS: C | PTS: 1 | 13. ANS: B | PTS: 1 |
| 5. ANS: B | PTS: 1 | 14. ANS: B | PTS: 1 |
| 6. ANS: A | PTS: 1 | 15. ANS: C | PTS: 1 |
| 7. ANS: D | PTS: 1 | 16. ANS: B | PTS: 1 |
| 8. ANS: B | PTS: 1 | 17. ANS: C | PTS: 1 |
| 9. ANS: A | PTS: 1 | 18. ANS: D | PTS: 1 |
| | | 19. ANS: C | PTS: 1 |