

ITEC185 MIDTERM SAMPLE REVIEW QUESTIONS

True/False

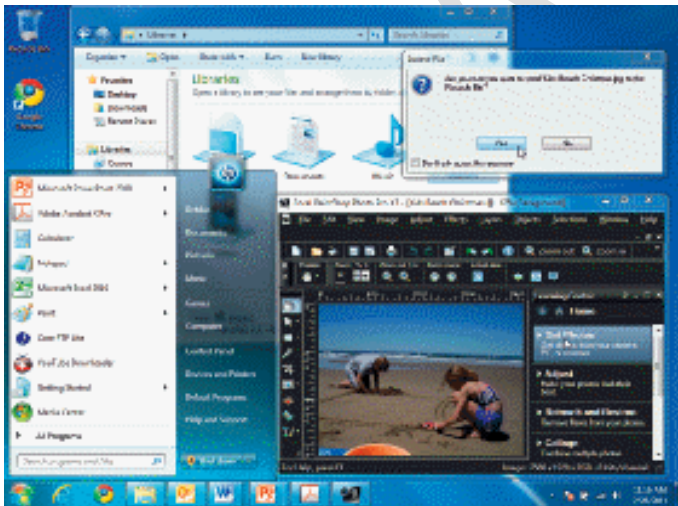
Indicate whether the statement is true or false.

- ___ 1. The external hardware components are located inside the main box or system unit of the computer.
- ___ 2. Data in RAM is kept when the program using that data is closed.
- ___ 3. Flash memory storage systems represent data using electrons.

Multiple Choice

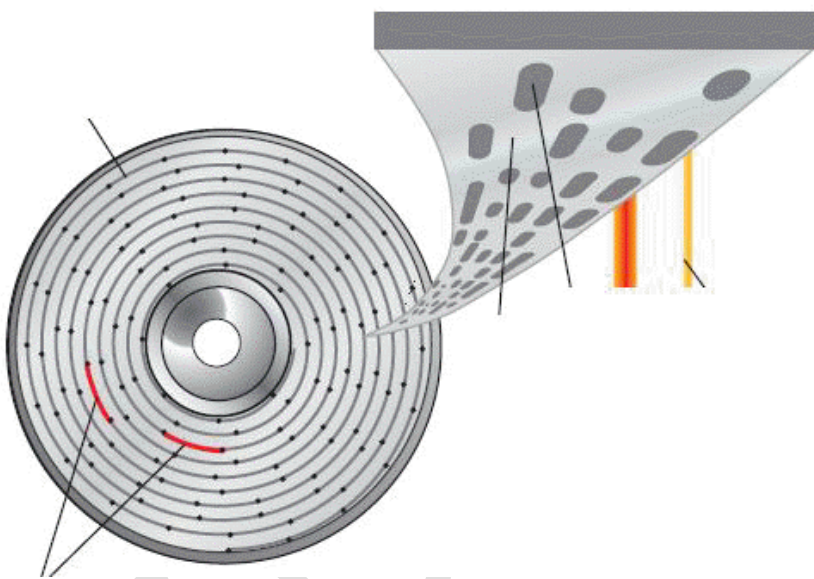
Identify the choice that best completes the statement or answers the question.

- ___ 1. ___ are an especially attractive option for portable computers and mobile devices because they consume less power, make no noise, and boot faster.
 - a. Memory-state drives
 - b. Solid-state drives
 - c. Static-state drives
 - d. Dynamic-state drives
- ___ 2. ___ occurs when data is entered into the computer.
 - a. Output
 - b. Processing
 - c. Input
 - d. Storage
- ___ 3. When data is processed into a meaningful form, it becomes _____.
 - a. information
 - b. code
 - c. a program
 - d. a database



- ___ 4. The Windows ___ shown in the figure above contains the following objects: Windows, Icons, Menus, Toolbars, Taskbar, Hyperlinks, Sizing buttons, and a Dialog box.
 - a. command
 - b. toolbox
 - c. general menu
 - d. desktop

- ___ 5. A personal computer (PC) or ___ is a small computer system designed to be used by one person at a time.
- | | |
|------------------|--------------------|
| a. processor | c. microchip |
| b. microcomputer | d. small processor |
- ___ 6. A(n) ___ is a medium-sized computer used to host programs and data for a small network.
- | | |
|-----------------------|--------------------|
| a. mainframe computer | c. midrange server |
| b. super server | d. Internet server |
- ___ 7. One measurement of the processing speed of a CPU is CPU clock speed, which is rated in ____.
- | | |
|--------------------|------------------|
| a. megahertz (MHz) | c. terahertz |
| b. gigahertz (GHz) | d. either a or b |
- ___ 8. ___ printers, like old ribbon typewriters, have a print mechanism that actually strikes the paper to transfer ink to the paper.
- | | |
|-----------|----------|
| a. Impact | c. Tap |
| b. Push | d. Click |



- ___ 9. A transition between a pit and a ___ in the accompanying figure is interpreted as a 1.
- | | |
|-----------|------------|
| a. track | c. land |
| b. sector | d. cluster |
- ___ 10. Most search sites use a ___—a software program—in conjunction with a huge database of information about Web pages to help visitors find Web pages that contain the information they are seeking.
- | | |
|-------------------|-----------------|
| a. search engine | c. search store |
| b. search toolbox | d. search box |
- ___ 11. The ___ is the most commonly used Internet search type.
- | | |
|---------------------|-----------------------|
| a. keyword search | c. directory search |
| b. character search | d. distributed search |
- ___ 12. Online shopping and online investing are examples of ____.
- | | |
|-------------------------|---------------|
| a. online merchandising | c. e-commerce |
| b. online marketing | d. e-trade |

- ___ 13. Video content delivered at the user's request is called ____.
- a. video channel
 - b. video networking
 - c. video-on-demand
 - d. Video over Internet Protocol
- ___ 14. ___ refers to any instruction delivered via the Web.
- a. Web-based training (WBT)
 - b. Web-based teaching (WBT)
 - c. Distance lessons
 - d. E-training
- ___ 15. One quick way to view the entire drawing area is to use the Zoom command by typing ____.
- a. type Z enter A enter
 - b. type Z enter E enter
 - c. type SHOWALL enter
 - d. type ALL enter
- ___ 16. When setting up a mechanical drawing in AutoCAD the drafter should set the units to ____.
- a. Fractional
 - b. Decimal
 - c. Architectural
 - d. Metric
- ___ 17. When using the direct entry method to create a horizontal line exactly three inches long the drafter should ____ first.
- a. pull the line from away from the starting point very carefully
 - b. enter 3 for the length of the line
 - c. read the coordinate position on the Dynamic Readout
 - d. insure that Ortho is on
- ___ 18. ____ option helps to shift the view without changing the viewing direction or magnification.
- a. Zoom
 - b. Pan
 - c. Ortho
 - d. Offset
- ___ 19. **Drawing templates** are held in files with the file extension:
- a. *.dwg
 - b. *.dwr
 - c. *.bmp
 - d. *.dwt

SAMPLE REVIEW QUESTIONS -- ANSWER SECTION

TRUE/FALSE

1. ANS: F PTS: 1
2. ANS: F PTS: 1
3. ANS: T PTS: 1

MULTIPLE CHOICE

1. ANS: B PTS: 1
2. ANS: C PTS: 1
3. ANS: A PTS: 1
4. ANS: D PTS: 1
5. ANS: B PTS: 1
6. ANS: C PTS: 1
7. ANS: D PTS: 1
8. ANS: A PTS: 1
9. ANS: C PTS: 1
10. ANS: A PTS: 1
11. ANS: A PTS: 1
12. ANS: C PTS: 1
13. ANS: C PTS: 1
14. ANS: A PTS: 1
15. ANS: A PTS: 1
16. ANS: B PTS: 1
17. ANS: D PTS: 1
18. ANS: B PTS: 1
19. ANS: A PTS: 1