



Project Management



(IENG419)



Fall:2020-2021

Research Assistants:

Ehsan Shakeri, Negar Akbarzadeh and Behzad Sanaei

Chapter 6

Tracking Progress of Task

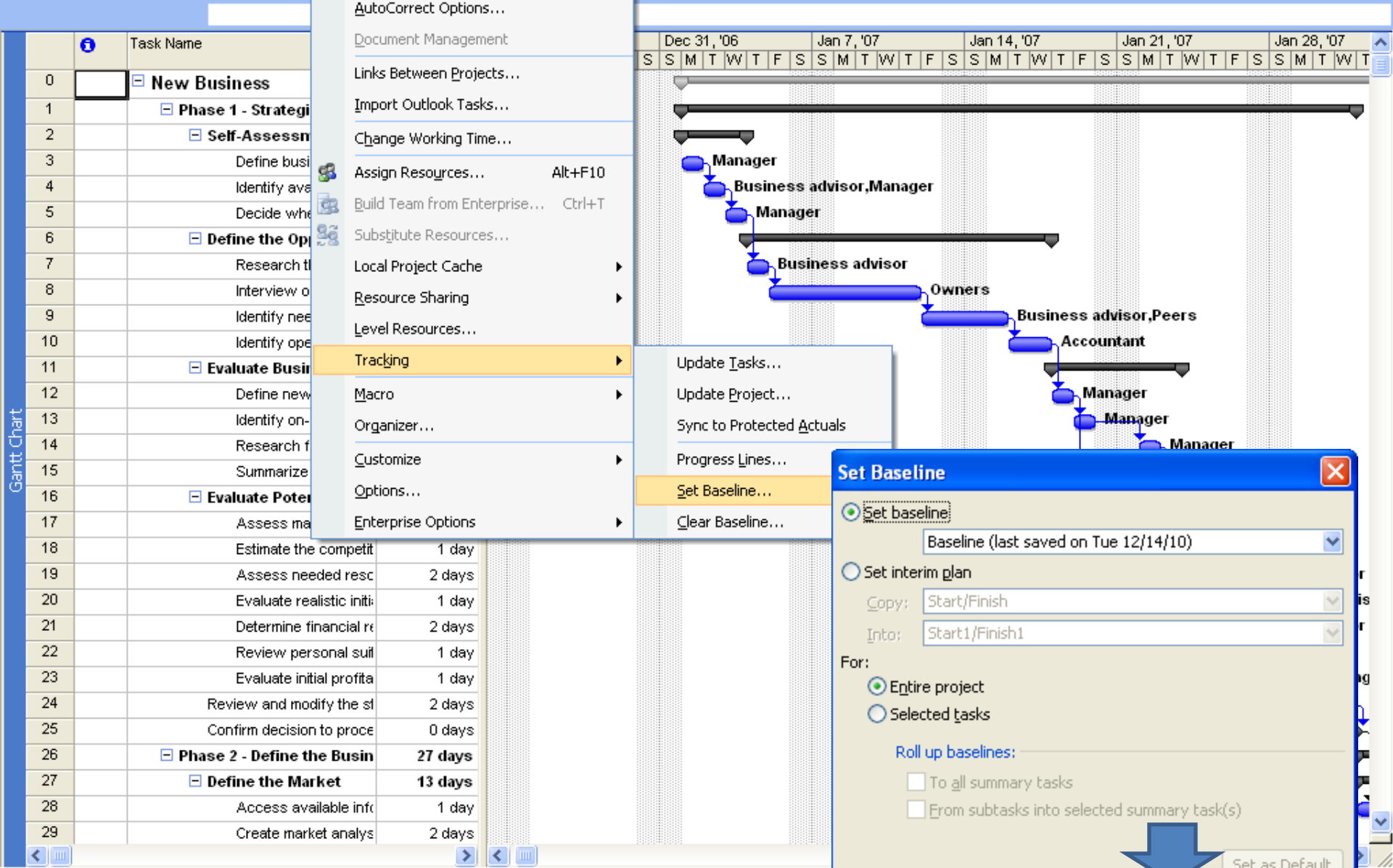
We learn in this chapter:

- ✓ Set Baseline
- ✓ Register Progress of TASK
- ✓ Register Completion of TASK
- ✓ Input Actual Values(Start, Finish , Duration)

Set Baseline:

Task Fields	Resource Fields	Assignment Fields
Start	Work and time phased work	Start
Finish	Cost and time phased cost	Finish
Duration		Work and time phased work
Work and time phased work		Cost and time phased cost
Cost and time phased cost		

time phased: when tasks and resources assign as an over time.



- Spelling... F7
- AutoCorrect Options...
- Document Management
- Links Between Projects...
- Import Outlook Tasks...
- Change Working Time...
- Assign Resources... Alt+F10
- Build Team from Enterprise... Ctrl+T
- Substitute Resources...
- Local Project Cache
- Resource Sharing
- Level Resources...
- Tracking
- Macro
- Organizer...
- Customize
- Options...
- Enterprise Options

- Update Tasks...
- Update Project...
- Sync to Protected Actuals
- Progress Lines...
- Set Baseline...
- Clear Baseline...

Set Baseline

Set baseline: Baseline (last saved on Tue 12/14/10)

Set interim plan

Copy: Start/Finish

Into: Start1/Finish1

For:

Entire project

Selected tasks

Roll up baselines:

To all summary tasks

From subtasks into selected summary task(s)

Set as Default

Help OK Cancel

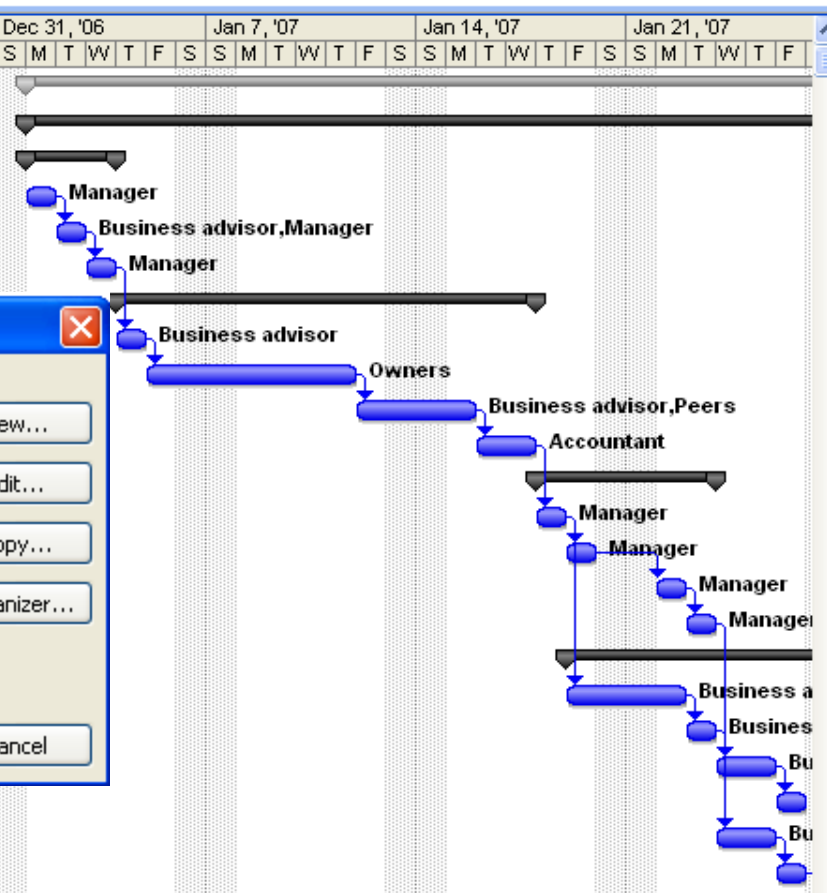
0			
1			
2			
3			
4			
5			
6			
7			
8			
9			
10			
11			
12			
13			
14			
15			
16	<input type="checkbox"/> Evaluate Potential Risk		
17	Assess market size		
18	Estimate the competi		
19	Assess needed resc		
20	Evaluate realistic initi	1 day	Fri 1/26A
21	Determine financial re	2 days	Wed 1/24A
22	Review personal suit	1 day	Fri 1/26A
23	Evaluate initial profita	1 day	Mon 1/29A
24	Review and modify the st	2 days	Tue 1/30A
25	Confirm decision to proce	0 days	Wed 1/31A
26	<input type="checkbox"/> Phase 2 - Define the Busin	27 days	Thu 2/1A
27	<input type="checkbox"/> Define the Market	13 days	Thu 2/1A
28	Access available inf	1 day	Thu 2/1A
29	Create market analys	2 days	Fri 2/2A

Duration	Start	Dec 24, '06	Dec 31, '06	Jan 7, '07	Jan 14, '07	Jan 21, '07																											
		S	S	M	T	W	T	F	S	S	S	M	T	W	T	F	S	S	S	M	T	W	T	F	S	S	S	M	T	W	T	F	S
124 days	Mon 1/1/0																																
23 days	Mon 1/1/0																																
3 days	Mon 1/1/0																																
1 day	Mon 1/1/0																																
1 day	Tue 1/2/0																																
1 day	Wed 1/3/0																																

More Views

Views:

- Resource Graph
- Resource Name Form
- Resource Sheet
- Resource Usage
- Task Details Form
- Task Entry
- Task Form
- Task Name Form
- Task Sheet
- Task Usage
- Tracking Gantt



	Task Name	Duration	Start	Finish	Predecessors	Resource Names
0	New Business	124 days	Mon 1/1/07	Thu 6/21/07		
1	Phase 1 - Strategic Plan	23 days	Mon 1/1/07	Wed 1/31/07		
2	Self-Assessment	3 days	Mon 1/1/07	Wed 1/3/07		
3	Define business visio	1 day	Mon 1/1/07	Mon 1/1/07		Manager
4	Identify available skill	1 day	Tue 1/2/07	Tue 1/2/07	3	Business advisor, Me
5	Decide whether to pr	1 day	Wed 1/3/07	Wed 1/3/07	4	Manager
6	Define the Opportunity	10 days	Thu 1/4/07	Wed 1/17/07		
7	Research the market	1 day	Thu 1/4/07	Thu 1/4/07	5	Business advisor
8	Interview owners of	5 days	Fri 1/5/07	Thu 1/11/07	7	Owners
9	Identify needed reso	2 days	Fri 1/12/07	Mon 1/15/07	8	Business advisor, Pe
10	Identify operating co	2 days	Tue 1/16/07	Wed 1/17/07	9	Accountant
11	Evaluate Business App	4 days	Thu 1/18/07	Tue 1/23/07		
12	Define new entity rec	1 day	Thu 1/18/07	Thu 1/18/07	10	Manager
13	Identify on-going bus	1 day	Fri 1/19/07	Fri 1/19/07	12	Manager
14	Research franchise i	1 day	Mon 1/22/07	Mon 1/22/07	13	Manager
15	Summarize business	1 day	Tue 1/23/07	Tue 1/23/07	14	Manager
16	Evaluate Potential Risk	7 days	Fri 1/19/07	Mon 1/29/07		
17	Assess market size :	2 days	Fri 1/19/07	Mon 1/22/07	12	Business advisor
18	Estimate the competit	1 day	Tue 1/23/07	Tue 1/23/07	17	Business advisor
19	Assess needed resc	2 days	Wed 1/24/07	Thu 1/25/07	18	Business advisor
20	Evaluate realistic initi	1 day	Fri 1/26/07	Fri 1/26/07	19	Business advisor
21	Determine financial re	2 days	Wed 1/24/07	Thu 1/25/07	15	Business advisor
22	Review personal suil	1 day	Fri 1/26/07	Fri 1/26/07	21	Manager
23	Evaluate initial profita	1 day	Mon 1/29/07	Mon 1/29/07	22	Manager
24	Review and modify the st	2 days	Tue 1/30/07	Wed 1/31/07	23	
25	Confirm decision to proce	0 days	Wed 1/31/07	Wed 1/31/07	24	
26	Phase 2 - Define the Busin	27 days	Thu 2/1/07	Fri 3/9/07		
27	Define the Market	13 days	Thu 2/1/07	Mon 2/19/07		
28	Access available inf	1 day	Thu 2/1/07	Thu 2/1/07	25	Business advisor
29	Create market analys	2 days	Fri 2/2/07	Mon 2/5/07	28	Business advisor
30	Implement market app	5 days	Tue 2/6/07	Mon 2/12/07	29	Business advisor

0	
1	
2	
3	
4	
5	
6	
7	
8	
9	
10	
11	
12	
13	
14	
15	
16	Evaluate Potential Risk
17	Assess market size
18	Estimate the competit
19	Assess needed resc
20	Evaluate realistic initi
21	Determine financial re
22	Review personal suil
23	Evaluate initial profita
24	Review and modify the sl
25	Confirm decision to proce
26	Phase 2 - Define the Busin
27	Define the Market
28	Access available info
29	Create market analys
30	Implement market exp

Duration	Start	Finish	Predecessors	Resource Names
124 days	Mon 1/1/07	Thu 6/21/07		
23 days	Mon 1/1/07	Wed 1/31/07		
3 days	Mon 1/1/07	Wed 1/3/07		
1 day	Mon 1/1/07	Mon 1/1/07		Manager
1 day	Tue 1/2/07	Tue 1/2/07	3	Business advisor, Me
1 day	Wed 1/3/07	Wed 1/3/07	4	Manager
10 days	Thu 1/4/07	Wed 1/17/07		
	Thu 1/4/07	Thu 1/4/07	5	Business advisor
	Thu 1/5/07	Thu 1/11/07	7	Owners
	Thu 1/2/07	Mon 1/15/07	8	Business advisor, Pe
	Thu 1/6/07	Wed 1/17/07	9	Accountant
	Thu 1/8/07	Tue 1/23/07		
	Thu 1/18/07	Thu 1/18/07	10	Manager
	Thu 1/19/07	Fri 1/19/07	12	Manager
	Thu 1/22/07	Mon 1/22/07	13	Manager
	Thu 1/23/07	Tue 1/23/07	14	Manager
	Thu 1/19/07	Mon 1/29/07		
	Thu 1/19/07	Mon 1/22/07	12	Business advisor
	Thu 1/23/07	Tue 1/23/07	17	Business advisor
	Thu 1/24/07	Thu 1/25/07	18	Business advisor
1 day	Fri 1/26/07	Fri 1/26/07	19	Business advisor
2 days	Wed 1/24/07	Thu 1/25/07	15	Business advisor
1 day	Fri 1/26/07	Fri 1/26/07	21	Manager
1 day	Mon 1/29/07	Mon 1/29/07	22	Manager
2 days	Tue 1/30/07	Wed 1/31/07	23	
0 days	Wed 1/31/07	Wed 1/31/07	24	
27 days	Thu 2/1/07	Fri 3/9/07		
13 days	Thu 2/1/07	Mon 2/19/07		
1 day	Thu 2/1/07	Thu 2/1/07	25	Business advisor
2 days	Fri 2/2/07	Mon 2/5/07	28	Business advisor
5 days	Tue 2/6/07	Mon 2/12/07	29	Business advisor

- Calendar
- Gantt Chart
- Network Diagram
- Task Usage
- Tracking Gantt
- Resource Graph
- Resource Sheet
- Resource Usage
- More Views...
- Table: Entry**
- Toolbars
- Turn Off Project Guide
- View Bar
- Hide Change Highlighting
- Header and Footer...
- Zoom...
- Evaluate Potential Risk**
- Assess market size
- Estimate the competit
- Assess needed resc
- Evaluate realistic initi
- Determine financial re
- Review personal suil
- Evaluate initial profita
- Review and modify the sl
- Confirm decision to proce
- Phase 2 - Define the Busin**
- Define the Market**
- Access available info
- Create market analys
- Implement market exp

- Cost
- Entry
- Hyperlink
- Schedule
- Summary
- Tracking
- Usage
- Variance**
- Work
- More Tables...

New Business

	Task Name	Start	Finish	Baseline Start	Baseline Finish	Start Var.	Finish Var.
0	New Business	Mon 1/1/07	Thu 6/21/07	Mon 1/1/07	Thu 6/21/07	0 days	0 days
1	Phase 1 - Strategic	Mon 1/1/07	Wed 1/31/07	Mon 1/1/07	Wed 1/31/07	0 days	0 days
2	Self-Assessment	Mon 1/1/07	Wed 1/3/07	Mon 1/1/07	Wed 1/3/07	0 days	0 days
3	Define business	Mon 1/1/07	Mon 1/1/07	Mon 1/1/07	Mon 1/1/07	0 days	0 days
4	Identify key	Tue 1/2/07	Tue 1/2/07	Tue 1/2/07	Tue 1/2/07	0 days	0 days
5	Decide w	Wed 1/3/07	Wed 1/3/07	Wed 1/3/07	Wed 1/3/07	0 days	0 days
6	Define the c	Thu 1/4/07	Wed 1/17/07	Thu 1/4/07	Wed 1/17/07	0 days	0 days
7	Research	Thu 1/4/07	Thu 1/4/07	Thu 1/4/07	Thu 1/4/07	0 days	0 days
8	Interview	Fri 1/5/07	Thu 1/11/07	Fri 1/5/07	Thu 1/11/07	0 days	0 days
9	Identify r	Fri 1/12/07	Mon 1/15/07	Fri 1/12/07	Mon 1/15/07	0 days	0 days
10	Identify c	Tue 1/16/07	Wed 1/17/07	Tue 1/16/07	Wed 1/17/07	0 days	0 days
11	Evaluate Bu	Thu 1/18/07	Tue 1/23/07	Thu 1/18/07	Tue 1/23/07	0 days	0 days
12	Define n	Thu 1/18/07	Thu 1/18/07	Thu 1/18/07	Thu 1/18/07	0 days	0 days
13	Identify c	Fri 1/19/07	Fri 1/19/07	Fri 1/19/07	Fri 1/19/07	0 days	0 days
14	Research	Mon 1/22/07	Mon 1/22/07	Mon 1/22/07	Mon 1/22/07	0 days	0 days
15	Summari	Tue 1/23/07	Tue 1/23/07	Tue 1/23/07	Tue 1/23/07	0 days	0 days
16	Evaluate Po	Fri 1/19/07	Mon 1/29/07	Fri 1/19/07	Mon 1/29/07	0 days	0 days
17	Assess	Fri 1/19/07	Mon 1/22/07	Fri 1/19/07	Mon 1/22/07	0 days	0 days
18	Estimate	Tue 1/23/07	Tue 1/23/07	Tue 1/23/07	Tue 1/23/07	0 days	0 days
19	Assess	Wed 1/24/07	Thu 1/25/07	Wed 1/24/07	Thu 1/25/07	0 days	0 days
20	Evaluate	Fri 1/26/07	Fri 1/26/07	Fri 1/26/07	Fri 1/26/07	0 days	0 days
21	Determir	Wed 1/24/07	Thu 1/25/07	Wed 1/24/07	Thu 1/25/07	0 days	0 days
22	Review	Fri 1/26/07	Fri 1/26/07	Fri 1/26/07	Fri 1/26/07	0 days	0 days
23	Evaluate	Mon 1/29/07	Mon 1/29/07	Mon 1/29/07	Mon 1/29/07	0 days	0 days
24	Review and	Tue 1/30/07	Wed 1/31/07	Tue 1/30/07	Wed 1/31/07	0 days	0 days
25	Confirm deci	Wed 1/31/07	Wed 1/31/07	Wed 1/31/07	Wed 1/31/07	0 days	0 days
26	Phase 2 - Defin	Thu 2/1/07	Fri 3/9/07	Thu 2/1/07	Fri 3/9/07	0 days	0 days
27	Define the l	Thu 2/1/07	Mon 2/19/07	Thu 2/1/07	Mon 2/19/07	0 days	0 days
28	Access	Thu 2/1/07	Thu 2/1/07	Thu 2/1/07	Thu 2/1/07	0 days	0 days
29	Create r	Fri 2/2/07	Mon 2/5/07	Fri 2/2/07	Mon 2/5/07	0 days	0 days
30	Implement	Tue 2/6/07	Mon 2/12/07	Tue 2/6/07	Mon 2/12/07	0 days	0 days

Tracking a Project:

Microsoft Project - New Business

File Edit View Insert Format Tools Project Report Collaborate Window Help

Type a question for help

10 B I U All Tasks Y= Tasks

Calendar
Gantt Chart
 Network Diagram
 Task Usage
 Tracking Gantt
 Resource Graph
 Resource Sheet
 Resource Usage
 More Views...
 Table: Variance
 Toolbars
 Turn Off Project Guide
 View Bar
 Hide Change Highlighting
 Header and Footer...
 Zoom...

Task Name	Finish	Baseline Start	Baseline Finish	Start Var.	Finish Var.	
0 New Business	6/21/07	Mon 1/1/07	Thu 6/21/07	0 days	0 days	
1	1/31/07	Mon 1/1/07	Wed 1/31/07	0 days	0 days	
2	1/3/07	Mon 1/1/07	Wed 1/3/07	0 days	0 days	
3	1/1/07	Mon 1/1/07	Mon 1/1/07	0 days	0 days	
4	1/2/07	Tue 1/2/07	Tue 1/2/07	0 days	0 days	
5	1/3/07	Wed 1/3/07	Wed 1/3/07	0 days	0 days	
6	1/17/07	Thu 1/4/07	Wed 1/17/07	0 days	0 days	
7	1/4/07	Thu 1/4/07	Thu 1/4/07	0 days	0 days	
8	1/11/07	Fri 1/5/07	Thu 1/11/07	0 days	0 days	
9	1/15/07	Fri 1/12/07	Mon 1/15/07	0 days	0 days	
10	1/17/07	Tue 1/16/07	Wed 1/17/07	0 days	0 days	
11	1/23/07	Thu 1/18/07	Tue 1/23/07	0 days	0 days	
12	1/18/07	Thu 1/18/07	Thu 1/18/07	0 days	0 days	
13	1/19/07	Fri 1/19/07	Fri 1/19/07	0 days	0 days	
14	1/22/07	Mon 1/22/07	Mon 1/22/07	0 days	0 days	
15	1/23/07	Tue 1/23/07	Tue 1/23/07	0 days	0 days	
16 Evaluate Project	Fri 1/19/07	Mon 1/29/07	Fri 1/19/07	Mon 1/29/07	0 days	0 days
17 Assess	Fri 1/19/07	Mon 1/22/07	Fri 1/19/07	Mon 1/22/07	0 days	0 days
18 Estimate	Tue 1/23/07	Tue 1/23/07	Tue 1/23/07	Tue 1/23/07	0 days	0 days
19 Assess	Wed 1/24/07	Thu 1/25/07	Wed 1/24/07	Thu 1/25/07	0 days	0 days
20 Evaluate	Fri 1/26/07	Fri 1/26/07	Fri 1/26/07	Fri 1/26/07	0 days	0 days
21 Determine	Wed 1/24/07	Thu 1/25/07	Wed 1/24/07	Thu 1/25/07	0 days	0 days
22 Review	Fri 1/26/07	Fri 1/26/07	Fri 1/26/07	Fri 1/26/07	0 days	0 days
23 Evaluate	Mon 1/29/07	Mon 1/29/07	Mon 1/29/07	Mon 1/29/07	0 days	0 days
24 Review and	Tue 1/30/07	Wed 1/31/07	Tue 1/30/07	Wed 1/31/07	0 days	0 days
25 Confirm decision	Wed 1/31/07	Wed 1/31/07	Wed 1/31/07	Wed 1/31/07	0 days	0 days
26 Phase 2 - Define the project	Thu 2/1/07	Fri 3/9/07	Thu 2/1/07	Fri 3/9/07	0 days	0 days
27 Define the project	Thu 2/1/07	Mon 2/19/07	Thu 2/1/07	Mon 2/19/07	0 days	0 days
28 Access	Thu 2/1/07	Thu 2/1/07	Thu 2/1/07	Thu 2/1/07	0 days	0 days

Task Sheet

	Task Name		
0	New Business		
1	Phase 1 - Strategic		
2	Self-Assessment		
3	Define business		
4	Identify available		
5	Decide whether to		
6	Define the Opportunity		
7	Research the market		
8	Interview owners		
9	Identify needs		
10	Identify opportunities		
11	Evaluate Business		
12	Define new business		
13	Identify opportunities		
14	Research the market		
15	Summarize findings		
16	Evaluate Potential		
17	Assess market		
18	Estimate the competition	1 day	Tue 1/23/10
19	Assess needed resources	2 days	Wed 1/24/10
20	Evaluate realistic initiatives	1 day	Fri 1/26/10
21	Determine financial requirements	2 days	Wed 1/24/10
22	Review personal suitability	1 day	Fri 1/26/10
23	Evaluate initial profitability	1 day	Mon 1/29/10
24	Review and modify the strategy	2 days	Tue 1/30/10
25	Confirm decision to proceed	0 days	Wed 1/31/10
26	Phase 2 - Define the Business	27 days	Thu 2/11/10
27	Define the Market	13 days	Thu 2/11/10
28	Access available information	1 day	Thu 2/11/10
29	Create market analysis	2 days	Fri 2/2/10

Spelling... F7

AutoCorrect Options...

Document Management

Links Between Projects...

Import Outlook Tasks...

Change Working Time...

Assign Resources... Alt+F10

Build Team from Enterprise... Ctrl+T

Substitute Resources...

Local Project Cache

Resource Sharing

Level Resources...

Tracking

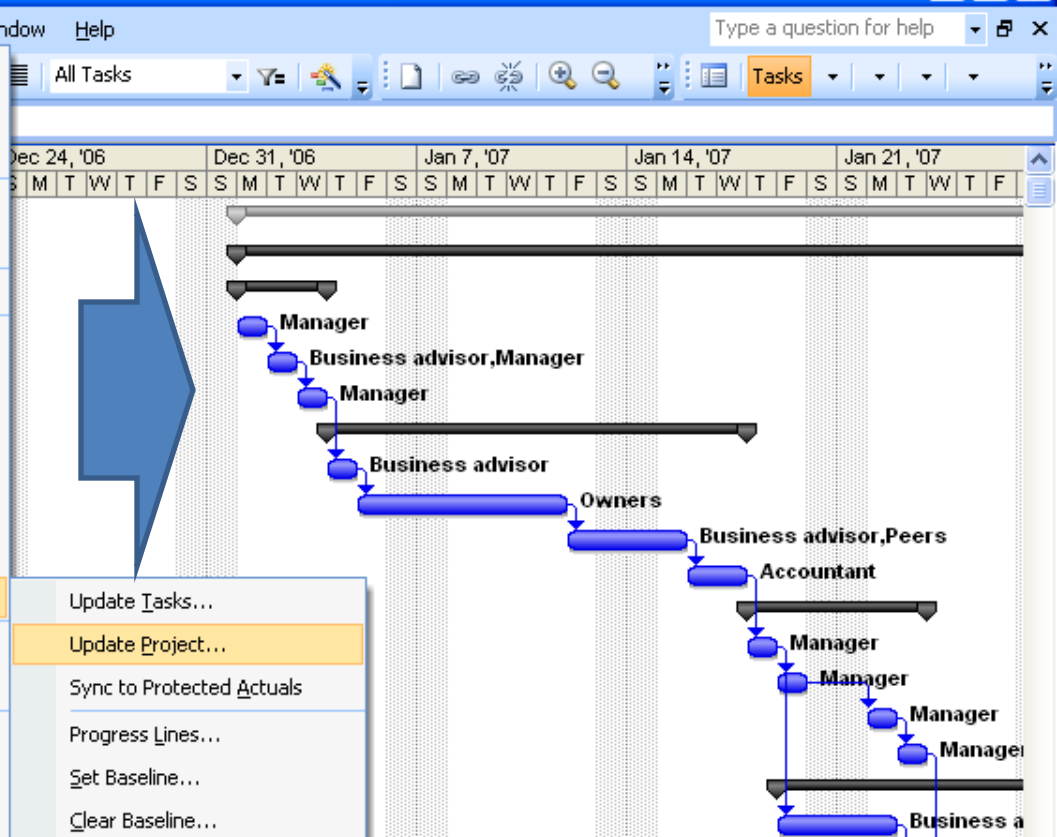
Macro

Organizer...

Customize

Options...

Enterprise Options



Update Tasks...

Update Project...

Sync to Protected Actuals

Progress Lines...

Set Baseline...

Clear Baseline...

Update Project

Update work as complete through: Tue 12/14/10

Set 0% - 100% complete

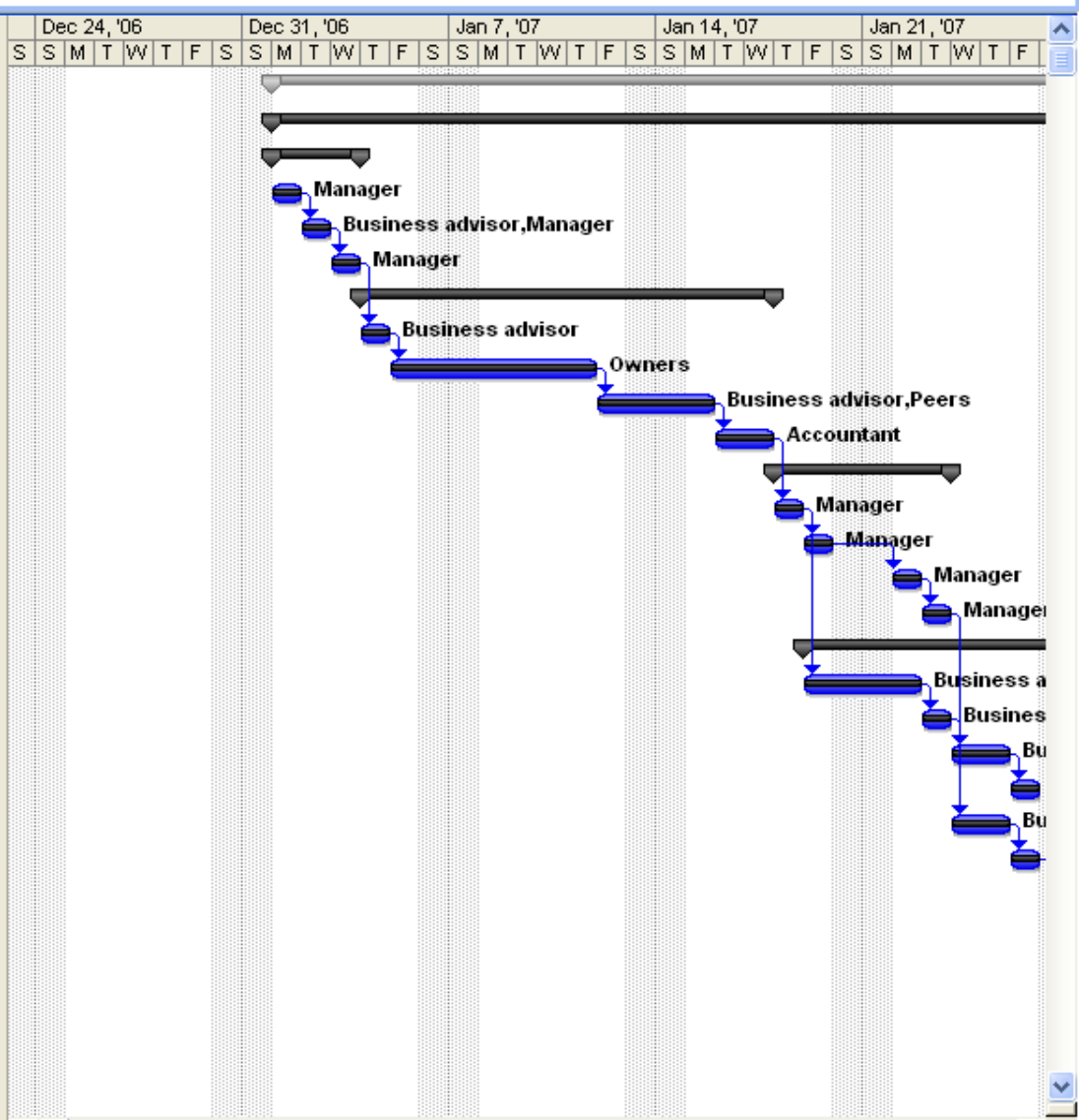
Set 0% or 100% complete only

Reschedule uncompleted work to start after: Tue 12/14/10

For: Entire project Selected tasks

Help OK Cancel

Task ID	Task Name	Duration	Start	Dec 24, '06							Dec 31, '06							Jan 7, '07							Jan 14, '07							Jan 21, '07						
				S	S	M	T	W	T	F	S	S	M	T	W	T	F	S	S	M	T	W	T	F	S	S	M	T	W	T	F	S	S	M	T	W	T	F
0	New Business	124 days	Mon 1/1/07																																			
1	Phase 1 - Strategic Plan	23 days	Mon 1/1/07																																			
2	Self-Assessment	3 days	Mon 1/1/07																																			
3	Define business visio	1 day	Mon 1/1/07																																			
4	Identify available skill	1 day	Tue 1/2/07																																			
5	Decide whether to pr	1 day	Wed 1/3/07																																			
6	Define the Opportunity	10 days	Thu 1/4/07																																			
7	Research the market	1 day	Thu 1/4/07																																			
8	Interview owners of	5 days	Fri 1/5/07																																			
9	Identify needed reso	2 days	Fri 1/12/07																																			
10	Identify operating co	2 days	Tue 1/16/07																																			
11	Evaluate Business App	4 days	Thu 1/18/07																																			
12	Define new entity rec	1 day	Thu 1/18/07																																			
13	Identify on-going bus	1 day	Fri 1/19/07																																			
14	Research franchise	1 day	Mon 1/22/07																																			
15	Summarize business	1 day	Tue 1/23/07																																			
16	Evaluate Potential Risk	7 days	Fri 1/19/07																																			
17	Assess market size :	2 days	Fri 1/19/07																																			
18	Estimate the competit	1 day	Tue 1/23/07																																			
19	Assess needed resc	2 days	Wed 1/24/07																																			
20	Evaluate realistic initi	1 day	Fri 1/26/07																																			
21	Determine financial re	2 days	Wed 1/24/07																																			
22	Review personal suit	1 day	Fri 1/26/07																																			
23	Evaluate initial profita	1 day	Mon 1/29/07																																			
24	Review and modify the sl	2 days	Tue 1/30/07																																			
25	Confirm decision to proce	0 days	Wed 1/31/07																																			
26	Phase 2 - Define the Busin	27 days	Thu 2/1/07																																			
27	Define the Market	13 days	Thu 2/1/07																																			
28	Access available inf	1 day	Thu 2/1/07																																			
29	Create market analys	2 days	Fri 2/2/07																																			



Completion Percentage:

Microsoft Project - New Business

File Edit View Insert Format Tools Project Report Collaborate Window Help

Type a question for help

10 B I U All Tasks

Tasks

Duration	Start	Dec 24, '06	Dec 31, '06	Jan 7, '07	Jan 14, '07	Jan 21, '07																			
		S	S	M	T	W	T	F	S	S	S	M	T	W	T	F	S	S	S	M	T	W	T	F	S
124 days	Mon 1/1/07																								
23 days	Mon 1/1/07																								
3 days	Mon 1/1/07																								
1 day	Mon 1/1/07																								
1 day	Tue 1/2/07																								
1 day	Wed 1/3/07																								
10 days	Thu 1/4/07																								
1 day	Thu 1/4/07																								

View menu options:

- Calendar
- Gantt Chart
- Network Diagram
- Task Usage
- Tracking Gantt
- Resource Graph
- Resource Sheet
- Resource Usage
- More Views...
- Table: Entry
- Toolbars
 - Standard
 - Formatting
 - Collaborate
 - Custom Forms
 - Drawing
 - Resource Management
 - Task Pane
 - Tracking
 - Visual Basic
 - Web
 - Analysis
 - Compare Project Versions
 - Network Diagram
 - PERT Analysis
 - Project Guide
 - Customize...
- Evaluate Potential Risk
 - Assess market size
 - Estimate the competit
 - Assess needed resc
 - Evaluate realistic initi
 - Determine financial re
 - Review personal suil
 - Evaluate initial profita
 - Review and modify the sl
 - Confirm decision to proce
- Phase 2 - Define the Busin
- Define the Market
 - Access available inf
 - Create market analys

Gantt Chart

Manager

Business advisor, Manager

Manager

Business advisor

Owners

Business advisor, Peers

Accountant

Manager

Manager

Manager

Manager

Business a

Business

Bu

Bu

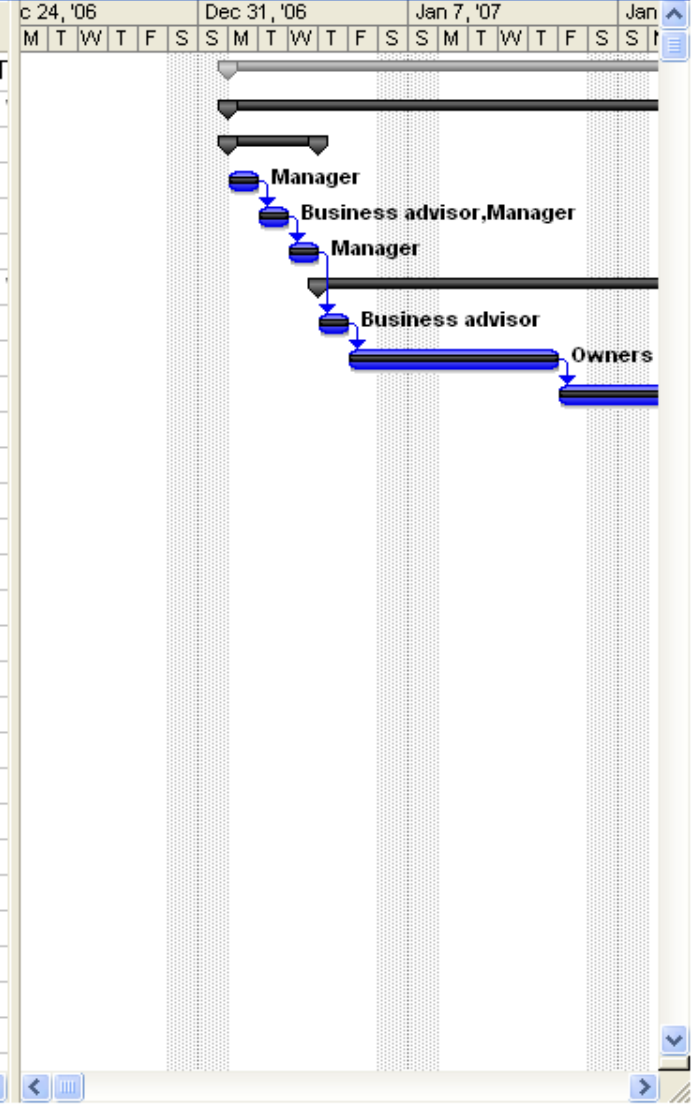
Show/Hide Project Guide

Tasks

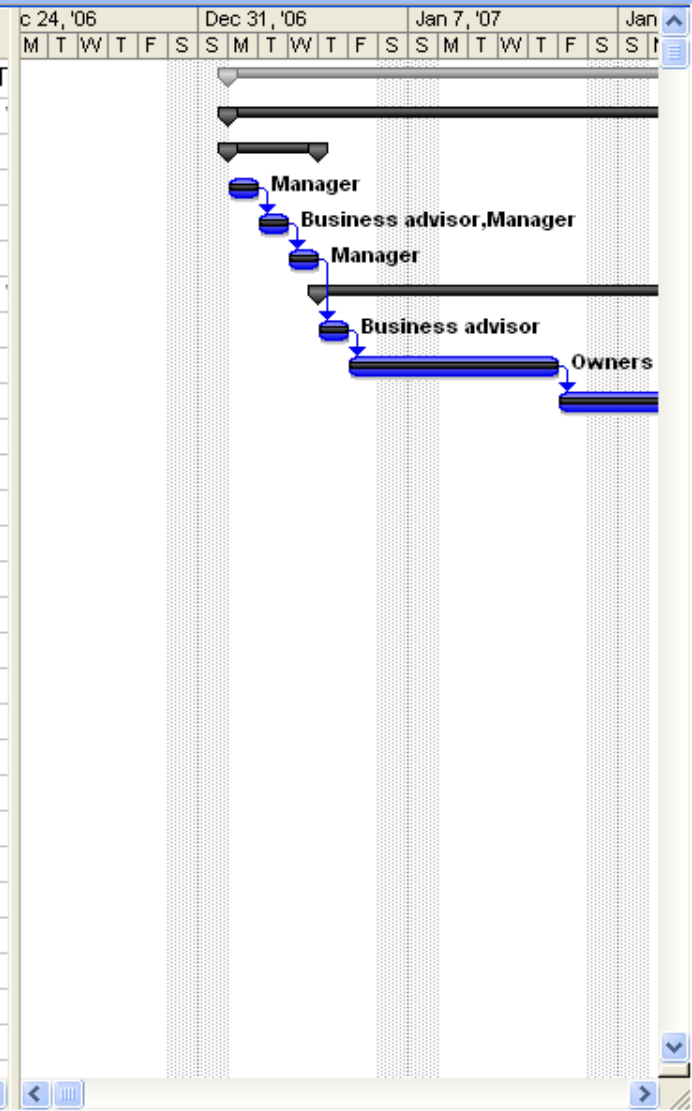
Plan and schedule your project's tasks by clicking an item below. Clicking an item displays tools and instructions for completing that step.

- Define the project
- Define general working times
- List the tasks in the project
- Organize tasks into phases
- Schedule tasks
- Link to or attach more task information
- Add columns of custom information
- Set deadlines and constrain tasks
- Identify risks to the project
- Add documents to the project

Task ID	Task Name	Duration	Start
0	New Business	124 days	Mon 1/1/07
1	Phase 1 - Strategic Plan	23 days	Mon 1/1/07
2	Self-Assessment	3 days	Mon 1/1/07
3	Define business visio	1 day	Mon 1/1/07
4	Identify available skill	1 day	Tue 1/2/07
5	Decide whether to pr	1 day	Wed 1/3/07
6	Define the Opportunity	10 days	Thu 1/4/07
7	Research the market	1 day	Thu 1/4/07
8	Interview owners of	5 days	Fri 1/5/07
9	Identify needed reso	2 days	Fri 1/12/07
10	Identify operating co	2 days	Tue 1/16/07
11	Evaluate Business App	4 days	Thu 1/18/07
12	Define new entity rec	1 day	Thu 1/18/07
13	Identify on-going bus	1 day	Fri 1/19/07
14	Research franchise i	1 day	Mon 1/22/07
15	Summarize business	1 day	Tue 1/23/07
16	Evaluate Potential Risk	7 days	Fri 1/19/07
17	Assess market size :	2 days	Fri 1/19/07
18	Estimate the competit	1 day	Tue 1/23/07
19	Assess needed resc	2 days	Wed 1/24/07
20	Evaluate realistic initi	1 day	Fri 1/26/07
21	Determine financial re	2 days	Wed 1/24/07
22	Review personal suit	1 day	Fri 1/26/07
23	Evaluate initial profita	1 day	Mon 1/29/07
24	Review and modify the st	2 days	Tue 1/30/07
25	Confirm decision to proce	0 days	Wed 1/31/07
26	Phase 2 - Define the Busin	27 days	Thu 2/1/07
27	Define the Market	13 days	Thu 2/1/07
28	Access available infr	1 day	Thu 2/1/07



Task ID	Task Name	Duration	Start
0	New Business	124 days	Mon 1/1/07
1	Phase 1 - Strategic Plan	23 days	Mon 1/1/07
2	Self-Assessment	3 days	Mon 1/1/07
3	Define business visio	1 day	Mon 1/1/07
4	Identify available skill	1 day	Tue 1/2/07
5	Decide whether to pr	1 day	Wed 1/3/07
6	Define the Opportunity	10 days	Thu 1/4/07
7	Research the market	1 day	Thu 1/4/07
8	Interview owners of	5 days	Fri 1/5/07
9	Identify needed reso	2 days	Fri 1/12/07
10	Identify operating co	2 days	Tue 1/16/07
11	Evaluate Business App	4 days	Thu 1/18/07
12	Define new entity rec	1 day	Thu 1/18/07
13	Identify on-going bus	1 day	Fri 1/19/07
14	Research franchise i	1 day	Mon 1/22/07
15	Summarize business	1 day	Tue 1/23/07
16	Evaluate Potential Risk	7 days	Fri 1/19/07
17	Assess market size :	2 days	Fri 1/19/07
18	Estimate the competit	1 day	Tue 1/23/07
19	Assess needed resc	2 days	Wed 1/24/07
20	Evaluate realistic initi	1 day	Fri 1/26/07
21	Determine financial re	2 days	Wed 1/24/07
22	Review personal suit	1 day	Fri 1/26/07
23	Evaluate initial profita	1 day	Mon 1/29/07
24	Review and modify the st	2 days	Tue 1/30/07
25	Confirm decision to proce	0 days	Wed 1/31/07
26	Phase 2 - Define the Busin	27 days	Thu 2/1/07
27	Define the Market	13 days	Thu 2/1/07
28	Access available infr	1 day	Thu 2/1/07



Track and manage your project as it progresses by clicking an item below. Clicking an item displays tools and instructions for completing that step.

Save a baseline plan to compare with later versions

Prepare to track the progress of your project

Incorporate progress information into the project

Check the progress of the project

Make changes to the project

See what is driving the start date of a task


Track risks and issues associated with this project

Prepare to track the progress of your project

Setup Tracking

Entering Progress

Do you want your team to use Project Server and Project Web Access to report their progress on tasks?

Yes 

No

Project Server allows you and your team members to view and update project information using Project Web Access.

Project Server information not entered

Before you can use Project Server, you need to specify connection information by clicking the link

Step 1 of 3

[Continue to Step 2](#)

Task Name	Dec 12, '10				Dec 19, '10				Dec 26, '10									
	W	T	F	S	S	M	T	W	T	F	S	S	M	T	W	T	F	S
0 New Business																		
1 Phase 1 - Strategic Plan																		
2 Self-Assessment																		
3 Define business vision																		
4 Identify available skills, information and support																		
5 Decide whether to proceed																		
6 Define the Opportunity																		
7 Research the market and competition																		
8 Interview owners of similar businesses																		
9 Identify needed resources																		
10 Identify operating cost elements																		
11 Evaluate Business Approach																		
12 Define new entity requirements																		
13 Identify on-going business purchase opportunities																		
14 Research franchise possibilities																		
15 Summarize business approach																		
16 Evaluate Potential Risks and Rewards																		
17 Assess market size and stability																		
18 Estimate the competition																		
19 Assess needed resource availability																		
20 Evaluate realistic initial market share																		
21 Determine financial requirements																		
22 Review personal suitability																		
23 Evaluate initial profitability																		
24 Review and modify the strategic plan																		
25 Confirm decision to proceed																		
26 Phase 2 - Define the Business Opportunity																		
27 Define the Market																		
28 Access available information																		

New Business

Setup Tracking

Tracking Method

How do you want to track the progress of each task?

- Always track by entering the Percent of Work Complete
- Always track by entering the Actual Work Done and Work Remaining **1**
- Always track by entering the hours of work done per time period

The least accurate though fastest method of tracking. Your resources will specify the percentage of work complete. between 0

Step 2 of 2

- Save and Finish **2**
- Go back to Step 1

Task Name	Dec 12, '10					Dec 19, '10					Dec 26, '10								
	W	T	F	S	S	S	M	T	W	T	F	S	S	M	T	W	T	F	S
0 New Business																			
1 Phase 1 - Strategic Plan																			
2 Self-Assessment																			
3 Define business vision																			
4 Identify available skills, information and support																			
5 Decide whether to proceed																			
6 Define the Opportunity																			
7 Research the market and competition																			
8 Interview owners of similar businesses																			
9 Identify needed resources																			
10 Identify operating cost elements																			
11 Evaluate Business Approach																			
12 Define new entity requirements																			
13 Identify on-going business purchase opportunities																			
14 Research franchise possibilities																			
15 Summarize business approach																			
16 Evaluate Potential Risks and Rewards																			
17 Assess market size and stability																			
18 Estimate the competition																			
19 Assess needed resource availability																			
20 Evaluate realistic initial market share																			
21 Determine financial requirements																			
22 Review personal suitability																			
23 Evaluate initial profitability																			
24 Review and modify the strategic plan																			
25 Confirm decision to proceed																			
26 Phase 2 - Define the Business Opportunity																			
27 Define the Market																			
28 Access available information																			

Track

Track and manage your project as it progresses by clicking an item below. Clicking an item displays tools and instructions for completing that step.

Save a baseline plan to compare with later versions

Prepare to track the progress of your project

Incorporate progress information into the project

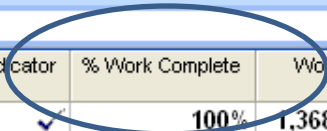
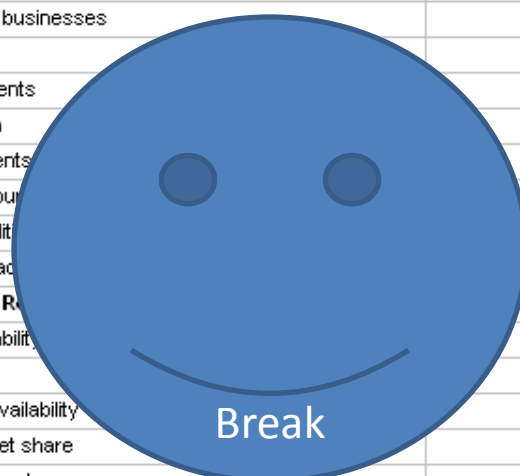
Check the progress of the project

Make changes to the project

See what is driving the start date of a task

Track risks and issues associated with this project

Task Name	Status Indicator	% Work Complete	Work
New Business	✓	100%	1,368
Phase 1 - Strategic Plan	✓	100%	240
Self-Assessment	✓	100%	32
Define business vision	✓	100%	8
Identify available skills, information and support	✓	100%	16
Decide whether to proceed	✓	100%	8
Define the Opportunity	✓	100%	96
Research the market and competition	✓	100%	8
Interview owners of similar businesses	✓	100%	40
Identify needed resources	✓	100%	32
Identify operating cost elements	✓	100%	16
Evaluate Business Approach	✓	100%	32
Define new entity requirements	✓	100%	8
Identify on-going business purposes	✓	100%	8
Research franchise possibilities	✓	100%	8
Summarize business approach	✓	100%	8
Evaluate Potential Risks and Rewards	✓	100%	80
Assess market size and stability	✓	100%	16
Estimate the competition	✓	100%	8
Assess needed resource availability	✓	100%	16
Evaluate realistic initial market share	✓	100%	8
Determine financial requirements	✓	100%	16
Review personal suitability	✓	100%	8
Evaluate initial profitability	✓	100%	8
Review and modify the strategic plan	✓	100%	0
Confirm decision to proceed	✓	100%	0
Phase 2 - Define the Business Opportunity	✓	100%	208
Define the Market	✓	100%	104
Access available information	✓	100%	8



Input Actual Value for Tasks:

Microsoft Project - New Business

File Edit View Insert Format Tools Project Report Collaborate Window Help

Show/Hide Project Guide

Tasks Resources Track Report

Tasks

Plan and schedule your project's tasks by clicking an item below. Clicking an item displays tools and instructions for completing that step.

- Define the project
- Define general working times
- List the tasks in the project
- Organize tasks into phases
- Schedule tasks
- Link to or attach more task information
- Add columns of custom information
- Set deadlines and constrain tasks
- Identify risks to the project

Task ID	Task Name	Duration
0	New Business	124 days
1	Phase 1 - Strategic Plan	23 days
2	Self-Assessment	3 days
3	Define business visio	1 day
4	Identify available skill	1 day
5	Decide whether to pr	1 day
6	Define the Opportunity	10 days
7	Research the market	1 day
8	Interview owners of	5 days
9	Identify needed reso	2 days
10	Identify operating co	2 days
11	Evaluate Business App	4 days
12	Define new entity rec	1 day
13	Identify on-going bus	1 day
14	Research franchise	1 day
15	Summarize business	1 day
16	Evaluate Potential Risk	7 days
17	Assess market size :	2 days
18	Estimate the competit	1 day
19	Assess needed resc	2 days
20	Evaluate realistic initi	1 day
21	Determine financial re	2 days
22	Review personal suit	1 day
23	Evaluate initial profita	1 day
24	Review and modify the st	2 days
25	Confirm decision to proce	0 days
26	Phase 2 - Define the Busin	27 days

Gantt Chart

The Gantt chart displays the project schedule from December 4, 2006, to January 21, 2007. It shows the following task dependencies and resource assignments:

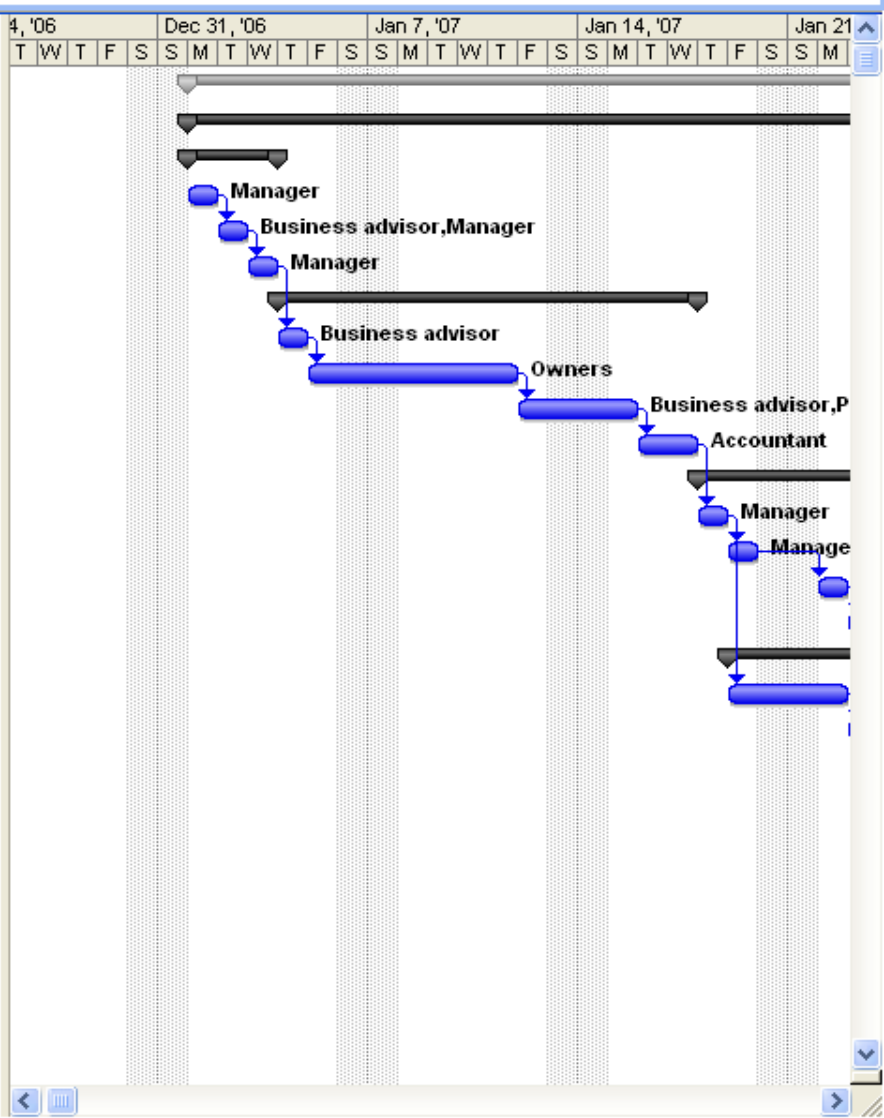
- Task 0 (New Business):** Duration 124 days, from Dec 4, '06 to Jan 21, '07.
- Task 1 (Phase 1 - Strategic Plan):** Duration 23 days, from Dec 4, '06 to Dec 27, '06.
- Task 2 (Self-Assessment):** Duration 3 days, from Dec 4, '06 to Dec 7, '06.
- Task 3 (Define business visio):** Duration 1 day, from Dec 4, '06 to Dec 5, '06. Resource: Manager.
- Task 4 (Identify available skill):** Duration 1 day, from Dec 5, '06 to Dec 6, '06. Resource: Business advisor, Manager.
- Task 5 (Decide whether to pr):** Duration 1 day, from Dec 6, '06 to Dec 7, '06. Resource: Manager.
- Task 6 (Define the Opportunity):** Duration 10 days, from Dec 7, '06 to Dec 17, '06.
- Task 7 (Research the market):** Duration 1 day, from Dec 17, '06 to Dec 18, '06. Resource: Business advisor.
- Task 8 (Interview owners of):** Duration 5 days, from Dec 18, '06 to Dec 23, '06. Resource: Owners.
- Task 9 (Identify needed reso):** Duration 2 days, from Dec 23, '06 to Dec 25, '06. Resource: Business advisor, P.
- Task 10 (Identify operating co):** Duration 2 days, from Dec 25, '06 to Dec 27, '06. Resource: Accountant.
- Task 11 (Evaluate Business App):** Duration 4 days, from Dec 27, '06 to Jan 1, '07.
- Task 12 (Define new entity rec):** Duration 1 day, from Jan 1, '07 to Jan 2, '07. Resource: Manager.
- Task 13 (Identify on-going bus):** Duration 1 day, from Jan 2, '07 to Jan 3, '07. Resource: Manage.
- Task 14 (Research franchise |):** Duration 1 day, from Jan 3, '07 to Jan 4, '07.
- Task 15 (Summarize business):** Duration 1 day, from Jan 4, '07 to Jan 5, '07.
- Task 16 (Evaluate Potential Risk):** Duration 7 days, from Jan 5, '07 to Jan 12, '07.
- Task 17 (Assess market size):** Duration 2 days, from Jan 12, '07 to Jan 14, '07.
- Task 18 (Estimate the competit):** Duration 1 day, from Jan 14, '07 to Jan 15, '07.
- Task 19 (Assess needed resc):** Duration 2 days, from Jan 15, '07 to Jan 17, '07.
- Task 20 (Evaluate realistic initi):** Duration 1 day, from Jan 17, '07 to Jan 18, '07.
- Task 21 (Determine financial re):** Duration 2 days, from Jan 18, '07 to Jan 20, '07.
- Task 22 (Review personal suit):** Duration 1 day, from Jan 20, '07 to Jan 21, '07.
- Task 23 (Evaluate initial profita):** Duration 1 day, from Jan 21, '07 to Jan 22, '07.
- Task 24 (Review and modify the st):** Duration 2 days, from Jan 22, '07 to Jan 24, '07.
- Task 25 (Confirm decision to proce):** Duration 0 days, from Jan 24, '07 to Jan 24, '07.
- Task 26 (Phase 2 - Define the Busin):** Duration 27 days, from Jan 24, '07 to Feb 20, '07.

Track

Track and manage your project as it progresses by clicking an item below. Clicking an item displays tools and instructions for completing that step.

- Save a baseline plan to compare with later versions
- [Prepare to track the progress of your project](#)
- Incorporate progress information into the project
- Check the progress of the project
- Make changes to the project
- See what is driving the start date of a task
- Track risks and issues associated with this project

Task ID	Task Name	Duration
0	New Business	124 days
1	Phase 1 - Strategic Plan	23 days
2	Self-Assessment	3 days
3	Define business visio	1 day
4	Identify available skill	1 day
5	Decide whether to pr	1 day
6	Define the Opportunity	10 days
7	Research the market	1 day
8	Interview owners of	5 days
9	Identify needed resou	2 days
10	Identify operating co	2 days
11	Evaluate Business App	4 days
12	Define new entity rec	1 day
13	Identify on-going bus	1 day
14	Research franchise	1 day
15	Summarize business	1 day
16	Evaluate Potential Risk	7 days
17	Assess market size :	2 days
18	Estimate the competit	1 day
19	Assess needed resc	2 days
20	Evaluate realistic initi	1 day
21	Determine financial re	2 days
22	Review personal suit	1 day
23	Evaluate initial profita	1 day
24	Review and modify the st	2 days
25	Confirm decision to proce	0 days
26	Phase 2 - Define the Busin	27 days
27	Define the Market	13 days
28	Access available infr	1 day



Setup Tracking

Entering Progress

Do you want your team to use Project Server and Project Web Access to report their progress on tasks?

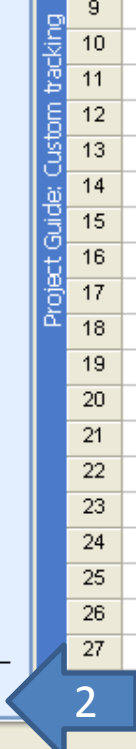
Yes

No

You will have to manually update progress for tasks in Project.

Step 1 of 2

[Continue to Step 2](#)



Task Name	Dec 12, '10			Dec 19, '10			Dec 26, '10			Jan									
	T	F	S	S	M	T	W	T	F	S	S	M	T	W	T	F	S	S	M
0 New Business																			
1 Phase 1 - Strategic Plan																			
2 Self-Assessment																			
3 Define business vision																			
4 Identify available skills, information and support																			
5 Decide whether to proceed																			
6 Define the Opportunity																			
7 Research the market and competition																			
8 Interview owners of similar businesses																			
9 Identify needed resources																			
10 Identify operating cost elements																			
11 Evaluate Business Approach																			
12 Define new entity requirements																			
13 Identify on-going business purchase opportunities																			
14 Research franchise possibilities																			
15 Summarize business approach																			
16 Evaluate Potential Risks and Rewards																			
17 Assess market size and stability																			
18 Estimate the competition																			
19 Assess needed resource availability																			
20 Evaluate realistic initial market share																			
21 Determine financial requirements																			
22 Review personal suitability																			
23 Evaluate initial profitability																			
24 Review and modify the strategic plan																			
25 Confirm decision to proceed																			
26 Phase 2 - Define the Business Opportunity																			
27 Define the Market																			
Access available information																			

Setup Tracking

Tracking Method

How do you want to track the progress of each task?

- Always track by entering the Percent of Work Complete
- Always track by entering the Actual Work Done and Work Remaining
- Always track by entering the hours of work done per time period

The least accurate though fastest method of tracking. Your resources will specify the percentage of work complete. between 0

Step 2 of 2

[Save and Finish](#)

[Go back to Step 1](#)

Next

Task Name	Dec 12, '10			Dec 19, '10			Dec 26, '10			Jan									
	T	F	S	S	M	T	W	T	F	S	S	M	T	W	T	F	S	S	M
0 New Business																			
1 Phase 1 - Strategic Plan																			
2 Self-Assessment																			
3 Define business vision																			
4 Identify available skills, information and support																			
5 Decide whether to proceed																			
6 Define the Opportunity																			
7 Research the market and competition																			
8 Interview owners of similar businesses																			
9 Identify needed resources																			
10 Identify operating cost elements																			
11 Evaluate Business Approach																			
12 Define new entity requirements																			
13 Identify on-going business purchase opportunities																			
14 Research franchise possibilities																			
15 Summarize business approach																			
16 Evaluate Potential Risks and Rewards																			
17 Assess market size and stability																			
18 Estimate the competition																			
19 Assess needed resource availability																			
20 Evaluate realistic initial market share																			
21 Determine financial requirements																			
22 Review personal suitability																			
23 Evaluate initial profitability																			
24 Review and modify the strategic plan																			
25 Confirm decision to proceed																			
26 Phase 2 - Define the Business Opportunity																			
Define the Market																			
Access available information																			

New Business

Setup Tracking

Tracking Method

How do you want to track the progress of each task?

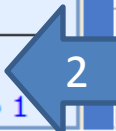
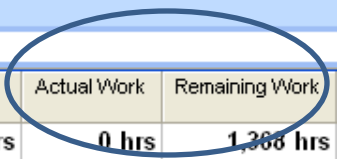
- Always track by entering the Percent of Work Complete
- Always track by entering the Actual Work Done and Work Remaining
- Always track by entering the hours of work done per time period

A moderately accurate and moderately time-consuming method of tracking. Your resources will specify how much work has

Step 2 of 2

- Save and Finish
- Go back to Step 1

Task Name	Work	Actual Work	Remaining Work	Du
0 New Business	1,368 hrs	0 hrs	1,368 hrs	12
1 Phase 1 - Strategic Plan	240 hrs	0 hrs	240 hrs	
2 Self-Assessment	32 hrs	0 hrs	32 hrs	
3 Define business vision	8 hrs	0 hrs	8 hrs	
4 Identify available skills, information and support	16 hrs	0 hrs	16 hrs	
5 Decide whether to proceed	8 hrs	0 hrs	8 hrs	
6 Define the Opportunity	96 hrs	0 hrs	96 hrs	
7 Research the market and competition	8 hrs	0 hrs	8 hrs	
8 Interview owners of similar businesses	40 hrs	0 hrs	40 hrs	
9 Identify needed resources	32 hrs	0 hrs	32 hrs	
10 Identify operating cost elements	16 hrs	0 hrs	16 hrs	
11 Evaluate Business Approach	32 hrs	0 hrs	32 hrs	
12 Define new entity requirements	8 hrs	0 hrs	8 hrs	
13 Identify on-going business purchase opportunities	8 hrs	0 hrs	8 hrs	
14 Research franchise possibilities	8 hrs	0 hrs	8 hrs	
15 Summarize business approach	8 hrs	0 hrs	8 hrs	
16 Evaluate Potential Risks and Rewards	80 hrs	0 hrs	80 hrs	
17 Assess market size and stability	16 hrs	0 hrs	16 hrs	
18 Estimate the competition	8 hrs	0 hrs	8 hrs	
19 Assess needed resource availability	16 hrs	0 hrs	16 hrs	
20 Evaluate realistic initial market share	8 hrs	0 hrs	8 hrs	
21 Determine financial requirements	16 hrs	0 hrs	16 hrs	
22 Review personal suitability	8 hrs	0 hrs	8 hrs	
23 Evaluate initial profitability	8 hrs	0 hrs	8 hrs	
24 Review and modify the strategic plan	0 hrs	0 hrs	0 hrs	
25 Confirm decision to proceed	0 hrs	0 hrs	0 hrs	
26 Phase 2 - Define the Business Opportunity	208 hrs	0 hrs	208 hrs	
27 Define the Market	104 hrs	0 hrs	104 hrs	
28 Access available information	8 hrs	0 hrs	8 hrs	



4 hrs

Track

Track and manage your project as it progresses by clicking an item below. Clicking an item displays tools and instructions for completing that step.

Save a baseline plan to compare with later versions

Prepare to track the progress of your project

Incorporate progress information into the project

Check the progress of the project

Make changes to the project

See what is driving the start date of a task

Track risks and issues associated with this project

	Task Name	Work	Actual Work	Remaining Work
0	New Business	1,368 hrs	4 hrs	1,364 hrs
1	Phase 1 - Strategic Plan	240 hrs	4 hrs	236 hrs
2	Self-Assessment	32 hrs	4 hrs	28 hrs
3	Define business vision	8 hrs	4 hrs	4 hrs
4	Identify available skills, information and support	16 hrs	0 hrs	16 hrs
5	Decide whether to proceed	8 hrs	0 hrs	8 hrs
6	Define the Opportunity	96 hrs	0 hrs	96 hrs
7	Research the market and competition	8 hrs	0 hrs	8 hrs
8	Interview owners of similar businesses	40 hrs	0 hrs	40 hrs
9	Identify needed resources	32 hrs	0 hrs	32 hrs
10	Identify operating cost elements	16 hrs	0 hrs	16 hrs
11	Evaluate Business Approach	32 hrs	0 hrs	32 hrs
12	Define new entity requirements	8 hrs	0 hrs	8 hrs
13	Identify on-going business purchase opportunities	8 hrs	0 hrs	8 hrs
14	Research franchise possibilities	8 hrs	0 hrs	8 hrs
15	Summarize business approach	8 hrs	0 hrs	8 hrs
16	Evaluate Potential Risks and Rewards	80 hrs	0 hrs	80 hrs
17	Assess market size and stability	16 hrs	0 hrs	16 hrs
18	Estimate the competition	8 hrs	0 hrs	8 hrs
19	Assess needed resource availability	16 hrs	0 hrs	16 hrs
20	Evaluate realistic initial market share	8 hrs	0 hrs	8 hrs
21	Determine financial requirements	16 hrs	0 hrs	16 hrs
22	Review personal suitability	8 hrs	0 hrs	8 hrs
23	Evaluate initial profitability	8 hrs	0 hrs	8 hrs
24	Review and modify the strategic plan	0 hrs	0 hrs	0 hrs
25	Confirm decision to proceed	0 hrs	0 hrs	0 hrs
26	Phase 2 - Define the Business Opportunity	208 hrs	0 hrs	208 hrs
27	Define the Market	104 hrs	0 hrs	104 hrs
28	Access available information	8 hrs	0 hrs	8 hrs

2, '10
 T W T F S

Task Name	Actual Work	Remaining Work	Duration	Start	Finish	Resource Name
0 New Business	4 hrs	1,364 hrs	124 days	Mon 1/1/07	Thu 6/21/07	
1 Phase 1 - Strategic Plan	4 hrs	236 hrs	23 days	Mon 1/1/07	Wed 1/31/07	
2 Self-Assessment	4 hrs	28 hrs	3 days	Mon 1/1/07	Wed 1/3/07	
3 Define business vision	0 hrs	4 hrs	1 day	Mon 1/1/07	Mon 1/1/07	Manager
4 Identify available skills	0 hrs	16 hrs	1 day	Tue 1/2/07	Tue 1/2/07	Business advisor, Manager
5 Decide whether to proceed	0 hrs	8 hrs	1 day	Wed 1/3/07	Wed 1/3/07	Manager
6 Define the Opportunity	0 hrs	96 hrs	10 days	Thu 1/4/07	Wed 1/17/07	
7 Research the market	0 hrs	8 hrs	1 day	Thu 1/4/07	Thu 1/4/07	Business advisor
8 Interview owners of business	0 hrs	40 hrs	5 days	Fri 1/5/07	Thu 1/11/07	Owners
9 Identify needed resources	0 hrs	16 hrs	1 day	Fri 1/12/07	Mon 1/15/07	Business advisor, Peers
10 Identify operating costs	0 hrs	16 hrs	1 day	Tue 1/16/07	Wed 1/17/07	Accountant
11 Evaluate Business Applications	0 hrs	16 hrs	1 day	Thu 1/18/07	Tue 1/23/07	
12 Define new entity requirements	0 hrs	16 hrs	1 day	Thu 1/18/07	Thu 1/18/07	Manager
13 Identify on-going business	0 hrs	16 hrs	1 day	Thu 1/18/07	Thu 1/18/07	Manager
14 Research franchise opportunities	0 hrs	16 hrs	1 day	Thu 1/18/07	Thu 1/18/07	Manager
15 Summarize business opportunities	0 hrs	16 hrs	1 day	Thu 1/18/07	Thu 1/18/07	Manager
16 Evaluate Potential Risks	0 hrs	16 hrs	1 day	Thu 1/18/07	Thu 1/18/07	
17 Assess market size and stability	16 hrs	0 hrs	1 day	Wed 12/15/10	Wed 12/15/10	
18 Estimate the competition	8 hrs	0 hrs	1 day	Wed 12/15/10	Wed 12/15/10	
19 Assess needed resource availability	16 hrs	0 hrs	1 day	Wed 12/15/10	Wed 12/15/10	
20 Evaluate realistic initial market share	8 hrs	0 hrs	1 day	Wed 12/15/10	Wed 12/15/10	
21 Determine financial requirements	16 hrs	0 hrs	1 day	Wed 12/15/10	Wed 12/15/10	
22 Review personal suitability	8 hrs	0 hrs	1 day	Wed 12/15/10	Wed 12/15/10	
23 Evaluate initial profitability	8 hrs	0 hrs	1 day	Wed 12/15/10	Wed 12/15/10	
24 Review and modify the strategic plan	0 hrs	0 hrs	1 day	Wed 12/15/10	Wed 12/15/10	
25 Confirm decision to proceed	0 hrs	0 hrs	1 day	Wed 12/15/10	Wed 12/15/10	
26 Phase 2 - Define the Business Opportunity	208 hrs	0 hrs	10 days	Mon 1/1/07	Wed 1/17/07	
27 Define the Market	104 hrs	0 hrs	5 days	Mon 1/1/07	Wed 1/17/07	
28 Access available information	8 hrs	0 hrs	1 day	Wed 12/15/10	Wed 12/15/10	

- Spelling... F7
- AutoCorrect Options...
- Document Management
- Links Between Projects...
- Import Outlook Tasks...
- Change Working Time...
- Assign Resources... Alt+F10
- Build Team from Enterprise... Ctrl+T
- Substitute Resources...
- Local Project Cache
- Resource Sharing
- Level Resources...
- Tracking**
- Macro
- Organizer...
- Customize
- Options...
- Enterprise Options

- Update Tasks...**
- Update Project...
- Sync to Protected Actuals
- Project...
- Set E...
- Clear...

Update Tasks

Name: Duration:

% Complete: Actual dur: Remaining dur:

Actual

Start:

Finish:

Current

Start:

Finish:

1 day

	Task Name	Work	Actual Work	Remaining Work	Duration	Start	Finish	Resou
0	New Business	1,388 hrs	4 hrs	1,384 hrs	126.5 days	Wed 12/15/10	Thu 6/9/11	
1	Phase 1 - Strategic Plan	260 hrs	4 hrs	256 hrs	25.5 days	Wed 12/15/10	Wed 1/19/11	
2	Self-Assessment	52 hrs	4 hrs	48 hrs	5.5 days	Wed 12/15/10	Wed 12/22/10	
3	Define business vision	28 hrs	4 hrs	24 hrs	3.5 days	Wed 12/15/10	Mon 12/20/10	Manager
4	Identify available skills, information and support	16 hrs	0 hrs	16 hrs	1 day	Mon 12/20/10	Tue 12/21/10	Business advisor, Ma
5	Decide whether to proceed	8 hrs	0 hrs	8 hrs	1 day	Tue 12/21/10	Wed 12/22/10	Manager
6	Define the Opportunity	96 hrs	0 hrs	96 hrs	10 days	Wed 12/22/10	Wed 1/5/11	
7	Research the market and competition	8 hrs	0 hrs	8 hrs	1 day	Wed 12/22/10	Thu 12/23/10	Business advisor
8	Interview owners of similar businesses	40 hrs	0 hrs	40 hrs	5 days	Thu 12/23/10	Thu 12/30/10	Owners
9	Identify needed resources	32 hrs	0 hrs	32 hrs	2 days	Thu 12/30/10	Mon 1/3/11	Business advisor, Pee
10	Identify operating cost elements	16 hrs	0 hrs	16 hrs	2 days	Mon 1/3/11	Wed 1/5/11	Accountant
11	Evaluate Business Approach	32 hrs	0 hrs	32 hrs	4 days	Wed 1/5/11	Tue 1/11/11	
12	Define new entity requirements	8 hrs	0 hrs	8 hrs	1 day	Wed 1/5/11	Thu 1/6/11	Manager
13	Identify on-going business purchase opportunities	8 hrs	0 hrs	8 hrs	1 day	Thu 1/6/11	Fri 1/7/11	Manager
14	Research franchise possibilities	8 hrs	0 hrs	8 hrs	1 day	Fri 1/7/11	Mon 1/10/11	Manager
15	Summarize business approach	8 hrs	0 hrs	8 hrs	1 day	Mon 1/10/11	Tue 1/11/11	Manager
16	Evaluate Potential Risks and Rewards	80 hrs	0 hrs	80 hrs	7 days	Thu 1/6/11	Mon 1/17/11	
17	Assess market size and stability	16 hrs	0 hrs	16 hrs	2 days	Thu 1/6/11	Mon 1/10/11	Business advisor
18	Estimate the competition	8 hrs	0 hrs	8 hrs	1 day	Mon 1/10/11	Tue 1/11/11	Business advisor
19	Assess needed resource availability	16 hrs	0 hrs	16 hrs	2 days	Tue 1/11/11	Thu 1/13/11	Business advisor
20	Evaluate realistic initial market share	8 hrs	0 hrs	8 hrs	1 day	Thu 1/13/11	Fri 1/14/11	Business advisor
21	Determine financial requirements	16 hrs	0 hrs	16 hrs	2 days	Tue 1/11/11	Thu 1/13/11	Business advisor
22	Review personal suitability	8 hrs	0 hrs	8 hrs	1 day	Thu 1/13/11	Fri 1/14/11	Manager
23	Evaluate initial profitability	8 hrs	0 hrs	8 hrs	1 day	Fri 1/14/11	Mon 1/17/11	Manager
24	Review and modify the strategic plan	0 hrs	0 hrs	0 hrs	2 days	Mon 1/17/11	Wed 1/19/11	
25	Confirm decision to proceed	0 hrs	0 hrs	0 hrs	0 days	Wed 1/19/11	Wed 1/19/11	
26	Phase 2 - Define the Business Opportunity	208 hrs	0 hrs	208 hrs	27 days	Wed 1/19/11	Fri 2/25/11	
27	Define the Market	104 hrs	0 hrs	104 hrs	13 days	Wed 1/19/11	Mon 2/7/11	
28	Access available information	8 hrs	0 hrs	8 hrs	1 day	Wed 1/19/11	Thu 1/20/11	Business advisor

Task Name	Actual Work	Remaining Work	Duration	Start	Finish	Resource
New Business	4 hrs	1,384 hrs	126.5 days	Wed 12/15/10	Thu 6/9/11	
Phase 1 - Strategic Plan	4 hrs	256 hrs	25.5 days	Wed 12/15/10	Wed 1/19/11	
Self-Assessment	4 hrs	48 hrs	5.5 days	Wed 12/15/10	Wed 12/22/10	
Define business vision	4 hrs	24 hrs	3.5 days	Wed 12/15/10	Mon 12/20/10	Manager
Identify available skills	0 hrs	16 hrs	1 day	Mon 12/20/10	Tue 12/21/10	Business advisor, Manager
Decide whether to proceed	0 hrs	8 hrs	1 day	Tue 12/21/10	Wed 12/22/10	Manager
Define the Opportunity	0 hrs	96 hrs	10 days	Wed 12/22/10	Wed 1/5/11	
Research the market	0 hrs	8 hrs	1 day	Wed 12/22/10	Thu 12/23/10	Business advisor
Interview owners of	0 hrs	40 hrs	5 days	Thu 12/23/10	Thu 12/30/10	Owners
Identify needed resources			2 days	Thu 12/30/10	Mon 1/3/11	Business advisor, Peer
Identify operating costs			2 days	Mon 1/3/11	Wed 1/5/11	Accountant
Evaluate Business Applications	4 days		4 days	Wed 1/5/11	Tue 1/11/11	
Define new entity requirements			1 day	Wed 1/5/11	Thu 1/6/11	Manager
Identify on-going business			1 day	Thu 1/6/11	Fri 1/7/11	Manager
Research franchise			1 day	Fri 1/7/11	Mon 1/10/11	Manager
Summarize business			1 day	Mon 1/10/11	Tue 1/11/11	Manager
Evaluate Potential Risks	7 days		7 days	Thu 1/6/11	Mon 1/17/11	
Assess market size and stability	16 hrs	0 hrs	16 hrs	Thu 1/6/11	Mon 1/17/11	Business advisor
Estimate the competition	8 hrs	0 hrs	8 hrs	Thu 1/6/11	Mon 1/17/11	Business advisor
Assess needed resource availability	16 hrs	0 hrs	16 hrs	Thu 1/6/11	Mon 1/17/11	Business advisor
Evaluate realistic initial market share	8 hrs	0 hrs	8 hrs	Thu 1/6/11	Mon 1/17/11	Business advisor
Determine financial requirements	16 hrs	0 hrs	16 hrs	Thu 1/6/11	Mon 1/17/11	Business advisor
Review personal suitability	8 hrs	0 hrs	8 hrs	Thu 1/6/11	Mon 1/17/11	Business advisor
Evaluate initial profitability	8 hrs	0 hrs	8 hrs	Thu 1/6/11	Mon 1/17/11	Business advisor
Review and modify the strategic plan	0 hrs	0 hrs	0 hrs	Thu 1/6/11	Mon 1/17/11	Business advisor
Confirm decision to proceed	0 hrs	0 hrs	0 hrs	Thu 1/6/11	Mon 1/17/11	Business advisor
Phase 2 - Define the Business Opportunity	208 hrs	0 hrs	208 hrs	Thu 1/6/11	Mon 1/17/11	
Define the Market	104 hrs	0 hrs	104 hrs	Thu 1/6/11	Mon 1/17/11	
Access available information	8 hrs	0 hrs	8 hrs	Thu 1/6/11	Mon 1/17/11	Business advisor

- Spelling... F7
- AutoCorrect Options...
- Document Management
- Links Between Projects...
- Import Outlook Tasks...
- Change Working Time...
- Assign Resources... Alt+F10
- Build Team from Enterprise... Ctrl+T
- Substitute Resources...
- Local Project Cache
- Resource Sharing
- Level Resources...
- Tracking**
 - Update Tasks...
 - Update Project...
 - Sync to Protected Actuals
 - Progress Lines...
 - Set Baseline...
 - Clear Baseline...
- Macro
- Organizer...
- Customize
- Options...
- Enterprise Options

Update Tasks

Name: Evaluate realistic initial market share Duration: 1d

% Complete: 0% Actual dur: 0d Remaining dur: 3d

Actual Current

Start: NA Start: Thu 1/13/11

Finish: NA Finish: Fri 1/14/11

Buttons: Help, Notes..., OK, Cancel

- Calendar
- Gantt Chart
- Network Diagram
- Task Usage
- Tracking Gantt
- Resource Graph
- Resource Sheet
- Resource Usage
- More Views...
- Table: Project Guide: Custom tracking table
- Toolbars**
 - Standard
 - Formatting
 - Collaborate
 - Custom Forms
 - Drawing
 - Resource Management
 - Task Pane
 - Tracking**
 - Visual Basic
 - Web
 - Analysis
 - Compare Project Versions
 - Network Diagram
 - PERT Analysis
 - Project Guide
 - Customize...
- Turn Off Project Guide
- View Bar
- Hide Change Highlighting
- Header and Footer...
- Zoom...

	Work	Actual Work	Remaining Work	Duration	Start	Finish	Resource
0	1,404 hrs	4 hrs	1,400 hrs	126.5 days	Wed 12/15/10	Thu 6/9/11	
1	276 hrs	4 hrs	272 hrs	25.5 days	Wed 12/15/10	Wed 1/19/11	
2	52 hrs	4 hrs	48 hrs	5.5 days	Wed 12/15/10	Wed 12/22/10	
3	28 hrs	4 hrs	24 hrs	3.5 days	Wed 12/15/10	Mon 12/20/10	Manager
4	16 hrs	0 hrs	16 hrs	1 day	Mon 12/20/10	Tue 12/21/10	Business advisor, Ma
5	8 hrs	0 hrs	8 hrs	1 day	Tue 12/21/10	Wed 12/22/10	Manager
6	96 hrs	0 hrs	96 hrs	10 days	Wed 12/22/10	Wed 1/5/11	
7	8 hrs	1 day	Wed 12/22/10	Thu 12/23/10	Business advisor		
8	40 hrs	5 days	Thu 12/23/10	Thu 12/30/10	Owners		
9	32 hrs	2 days	Thu 12/30/10	Mon 1/3/11	Business advisor, Pee		
10	16 hrs	2 days	Mon 1/3/11	Wed 1/5/11	Accountant		
11	32 hrs	4 days	Wed 1/5/11	Tue 1/11/11			
12	8 hrs	1 day	Wed 1/5/11	Thu 1/6/11	Manager		
13	8 hrs	1 day	Thu 1/6/11	Fri 1/7/11	Manager		
14	8 hrs	1 day	Fri 1/7/11	Mon 1/10/11	Manager		
15	8 hrs	1 day	Mon 1/10/11	Tue 1/11/11	Manager		
16	96 hrs	8 days	Thu 1/6/11	Tue 1/18/11			
17	16 hrs	2 days	Thu 1/6/11	Mon 1/10/11	Business advisor		
18	8 hrs	1 day	Mon 1/10/11	Tue 1/11/11	Business advisor		
19	16 hrs	2 days	Tue 1/11/11	Thu 1/13/11	Business advisor		
20	24 hrs	3 days	Thu 1/13/11	Tue 1/18/11	Business advisor		
21	16 hrs	2 days	Tue 1/11/11	Thu 1/13/11	Business advisor		
22	8 hrs	1 day	Thu 1/13/11	Fri 1/14/11	Manager		
23	8 hrs	1 day	Fri 1/14/11	Mon 1/17/11	Manager		
24	0 hrs	2 days	Mon 1/17/11	Wed 1/19/11			
25	0 hrs	0 days	Wed 1/19/11	Wed 1/19/11			
26	208 hrs	0 hrs	208 hrs	27 days	Wed 1/19/11	Fri 2/25/11	
27	104 hrs	0 hrs	104 hrs	13 days	Wed 1/19/11	Mon 2/7/11	
28	8 hrs	0 hrs	8 hrs	1 day	Wed 1/19/11	Thu 1/20/11	Business advisor

Project Guide: Custom tracking

File Edit View Insert Format Tools Project Report Collaborate Window Help

Type a question for help

8 B I U All Tasks

Tasks Resources Track Report

Research the market and competition

	Task Name	Work	Actual Work	Remaining Work	Duration	Start	Finish	Re:
0	New Business	1,388 hrs	4 hrs	1,384 hrs	126.5 days	Wed 12/15/10	Thu 6/9/11	
1	Phase 1 - Strategic Plan	260 hrs	4 hrs	256 hrs	25.5 days	Wed 12/15/10	Wed 1/19/11	
2	Self-Assessment	52 hrs	4 hrs	48 hrs	5.5 days	Wed 12/15/10	Wed 12/22/10	
3	Define business vision	28 hrs	4 hrs	24 hrs	3.5 days	Wed 12/15/10	Mon 12/20/10	Manager
4	Identify available skills, information e	16 hrs	0 hrs	16 hrs	1 day	Mon 12/20/10	Tue 12/21/10	Business advisor
5	Decide whether to proceed	8 hrs	0 hrs	8 hrs	1 day	Tue 12/21/10	Wed 12/22/10	Manager
6	Define the Opportunity	96 hrs	0 hrs	96 hrs	10 days	Wed 12/22/10	Wed 1/5/11	
7	Research the market and competitio	8 hrs	0 hrs	8 hrs	1 day	Wed 12/22/10	Thu 12/23/10	Business advisor
8	Interview owners of similar busines	40 hrs	0 hrs	40 hrs	5 days	Thu 12/23/10	Thu 12/30/10	Owners
9	Identify needed resources	32 hrs	0 hrs	32 hrs	2 days	Thu 12/30/10	Mon 1/3/11	Business advisor
10	Identify operating cost elements	16 hrs	0 hrs	16 hrs	2 days	Mon 1/3/11	Wed 1/5/11	Accountant
11	Evaluate Business Approach	32 hrs	0 hrs	32 hrs	4 days	Wed 1/5/11	Tue 1/11/11	
12	Define new entity requirements	8 hrs	0 hrs	8 hrs	1 day	Wed 1/5/11	Thu 1/6/11	Manager
13	Identify on-going business purchas	8 hrs	0 hrs	8 hrs	1 day	Thu 1/6/11	Fri 1/7/11	Manager
14	Research franchise possibilities	8 hrs	0 hrs	8 hrs	1 day	Fri 1/7/11	Mon 1/10/11	Manager
15	Summarize business approach	8 hrs	0 hrs	8 hrs	1 day	Mon 1/10/11	Tue 1/11/11	Manager
16	Evaluate Potential Risks and Rewar	80 hrs	0 hrs	80 hrs	7 days	Thu 1/6/11	Mon 1/17/11	
17	Assess market size and stability	16 hrs	0 hrs	16 hrs	2 days	Thu 1/6/11	Mon 1/10/11	Business advisor
18	Estimate the competition	8 hrs	0 hrs	8 hrs	1 day	Mon 1/10/11	Tue 1/11/11	Business advisor
19	Assess needed resource availability	16 hrs	0 hrs	16 hrs	2 days	Tue 1/11/11	Thu 1/13/11	Business advisor
20	Evaluate realistic initial market share	8 hrs	0 hrs	8 hrs	1 day	Thu 1/13/11	Fri 1/14/11	Business advisor
21	Determine financial requirements	16 hrs	0 hrs	16 hrs	2 days	Tue 1/11/11	Thu 1/13/11	Business advisor
22	Review personal suitability	8 hrs	0 hrs	8 hrs	1 day	Thu 1/13/11	Fri 1/14/11	Manager
23	Evaluate initial profitability	8 hrs	0 hrs	8 hrs	1 day	Fri 1/14/11	Mon 1/17/11	Manager
24	Review and modify the strategic plan	0 hrs	0 hrs	0 hrs	2 days	Mon 1/17/11	Wed 1/19/11	
25	Confirm decision to proceed	0 hrs	0 hrs	0 hrs	0 days	Wed 1/19/11	Wed 1/19/11	
26	Phase 2 - Define the Business Opportu	208 hrs	0 hrs	208 hrs	27 days	Wed 1/19/11	Fri 2/25/11	

Project Guide: Custom tracking

