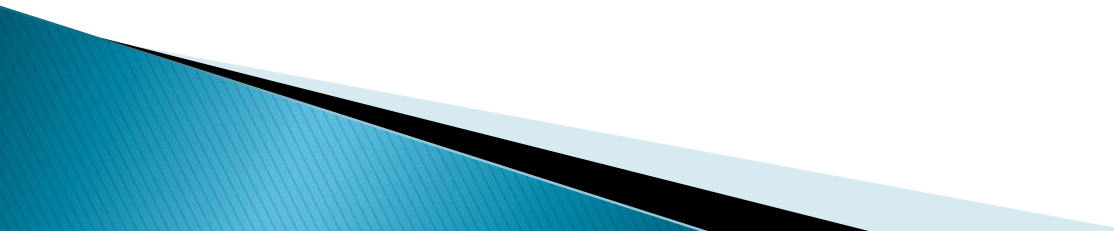


Control Charts Cont. ;

1. X-Bar and S Charts
 2. MR- Chart
 3. p Chart
 4. np Chart
 5. c- Chart
- 

Please open the excel file that you download from the course web page. And copy and paste the data related with Q1 to the Spss program.

*Untitled1 [DataSet0] - PASW Statistics Data Editor

File Edit View Data Transform Analyze Graphs Utilities Add-ons Window Help



- Reports ▶
- Descriptive Statistics ▶
- Compare Means ▶
- General Linear Model ▶
- Correlate ▶
- Regression ▶
- Classify ▶
- Dimension Reduction ▶
- Scale ▶
- Nonparametric Tests ▶
- Forecasting ▶
- Multiple Response ▶
- Quality Control ▶**
- ROC Curve...



	sample	observation3	observation4	observation5
1	1			
2	2			
3	3			
4	4			
5	5			
6	6			
7	7			
8	8			
9	9			
10	10			
11	11	20	20	23
12	12	22	21	20

- Control Charts...**
- Pareto Charts...

21

23

22

22

20

22

23

18

19

23

24

20

23

20

19

22

24

24

18

22

23

21


22


20

22


Control Charts


Variables Charts

 X-bar, R, s

 Individuals, Moving Range

Attribute Charts

 p, np

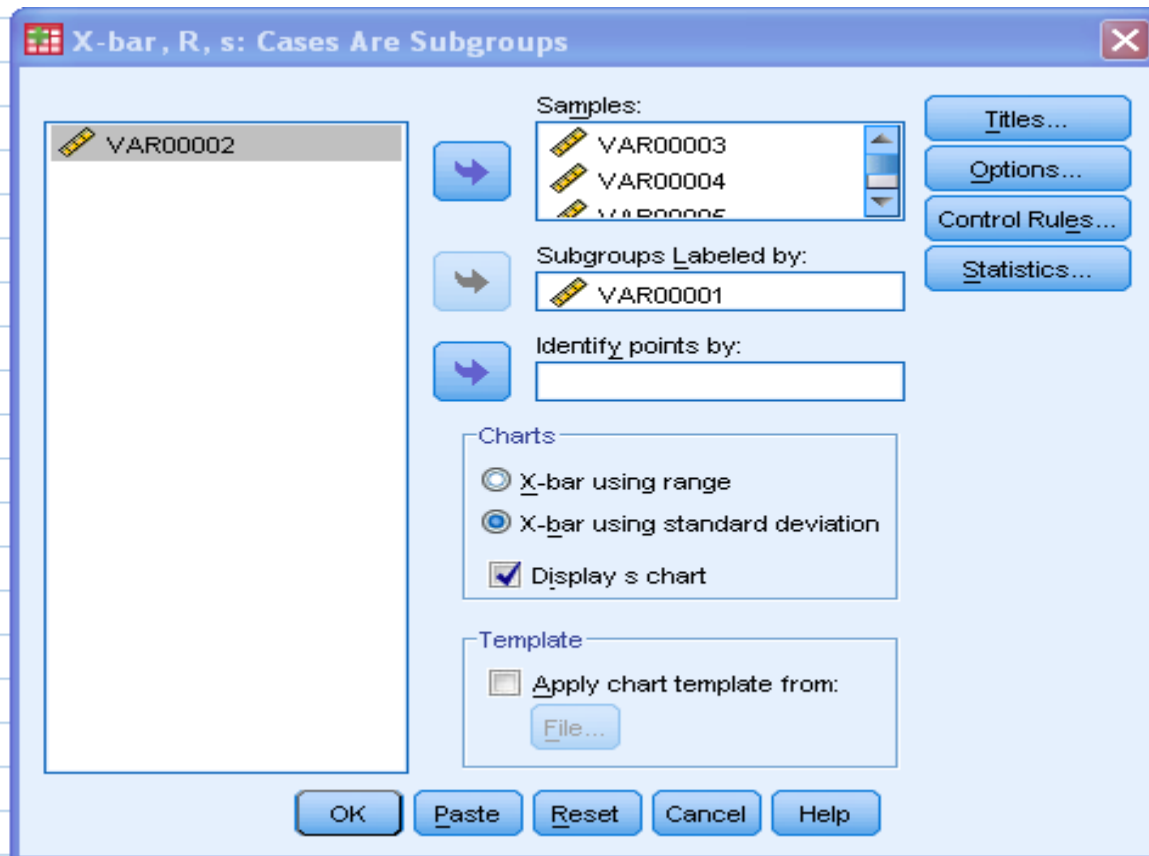
 c, u

Data Organization

Cases are units

Cases are subgroups

Define Cancel Help



X-bar, R, s: Control Rules



Select all control rules

Above +3 sigma

Below -3 sigma

2 out of last 3 above +2 sigma

2 out of last 3 below -2 sigma

4 out of last 5 above +1 sigma

4 out of last 5 below -1 sigma

8 points above center line

8 points below center line

6 in a row trending up

6 in a row trending down

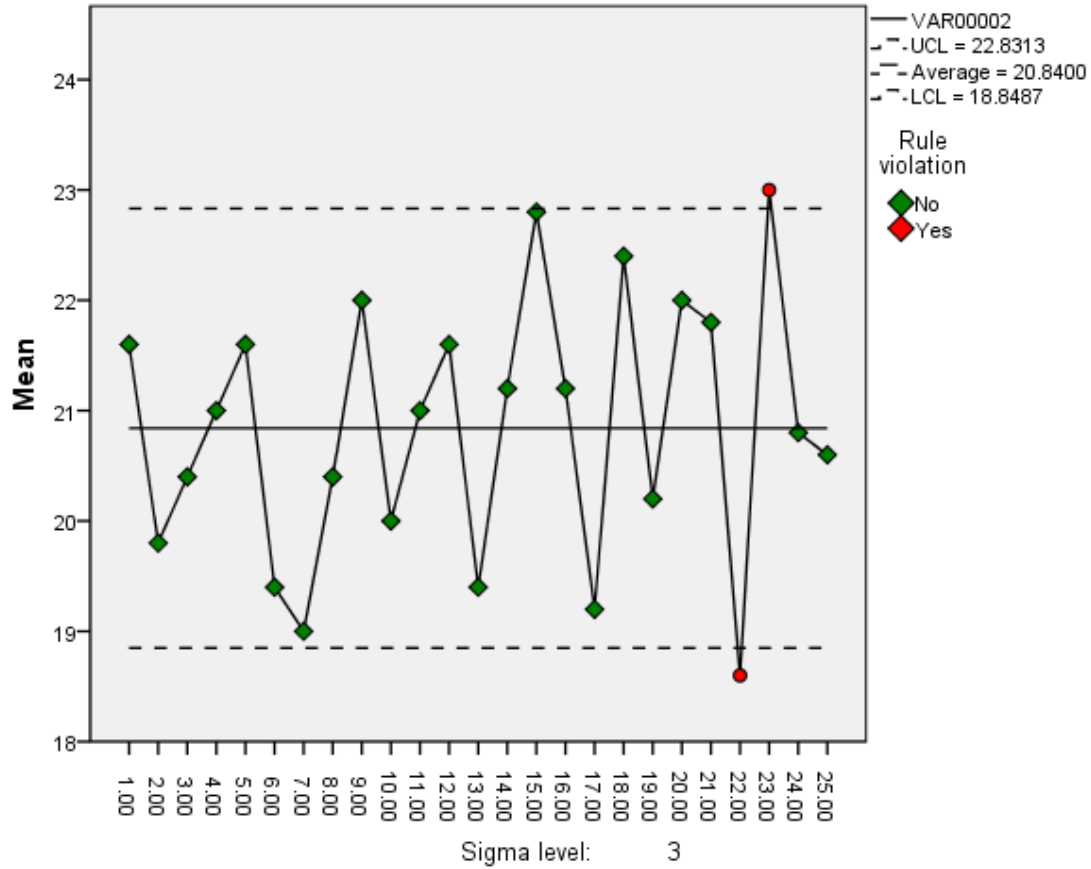
14 in a row alternating

Continue

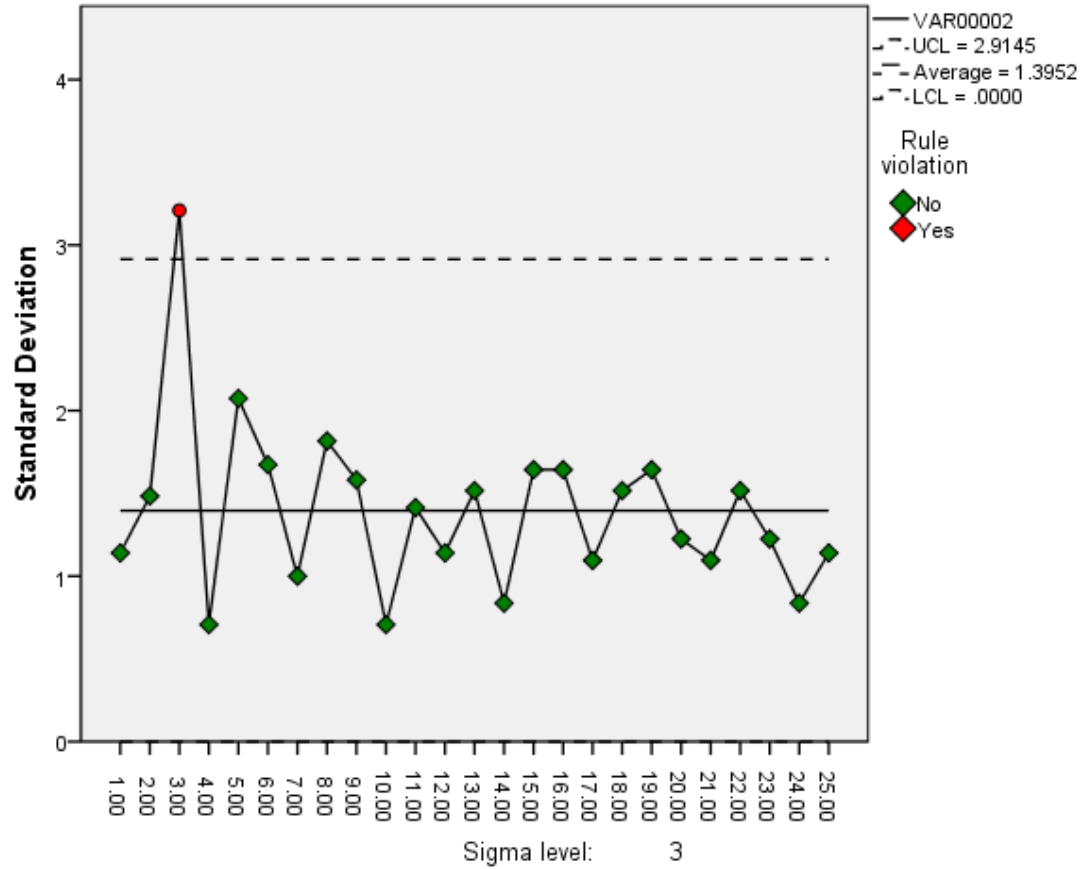
Cancel

Help

Control Chart: VAR00002



Control Chart: VAR00002



Rule Violations for \bar{X} -bar

VAR00001	Violations for Points
22.00	Less than -3 sigma
23.00	Greater than +3 sigma

2 points violate control rules.

Rule Violations for SD

VAR00001	Violations for Points
3.00	Greater than +3 sigma

1 points violate control rules.

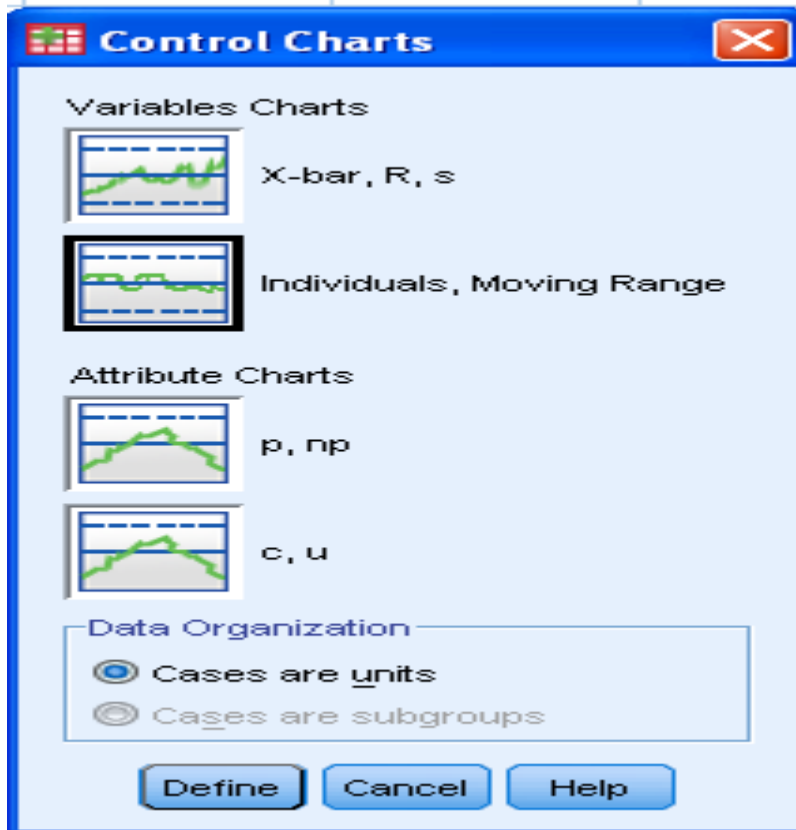
Remedial actions were taken to rectify this situation.

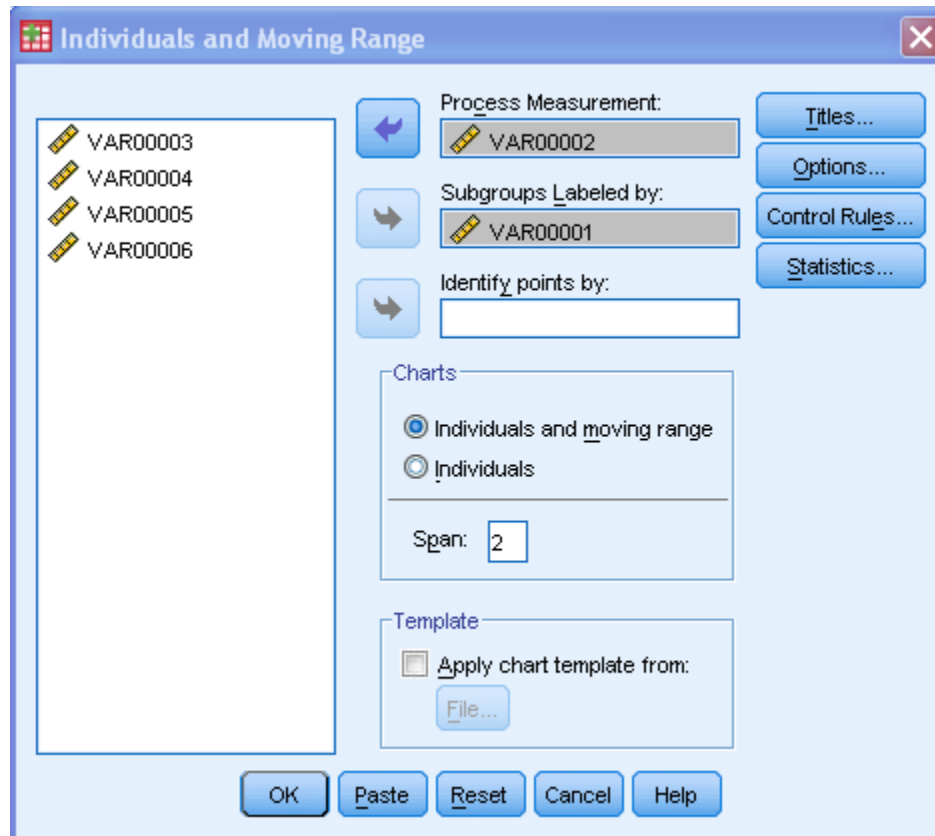
- ▶ Delete samples necessary and revised the control limits.

Example 2;

MR-Chart

- ▶ Please open the excel file that you download from the course web page. And copy and paste the data related with Q2 to the Spss program.





Individuals and Moving Range

VAR00003
VAR00004
VAR00005
VAR00006

Process Measurement:
VAR00002

Subgroups Labeled by:
VAR00001

Identify points by:

Charts:
 Individuals and moving range
 Individuals

Span: 2

Template:
 Apply chart template from:
File...

OK Paste Reset Cancel Help

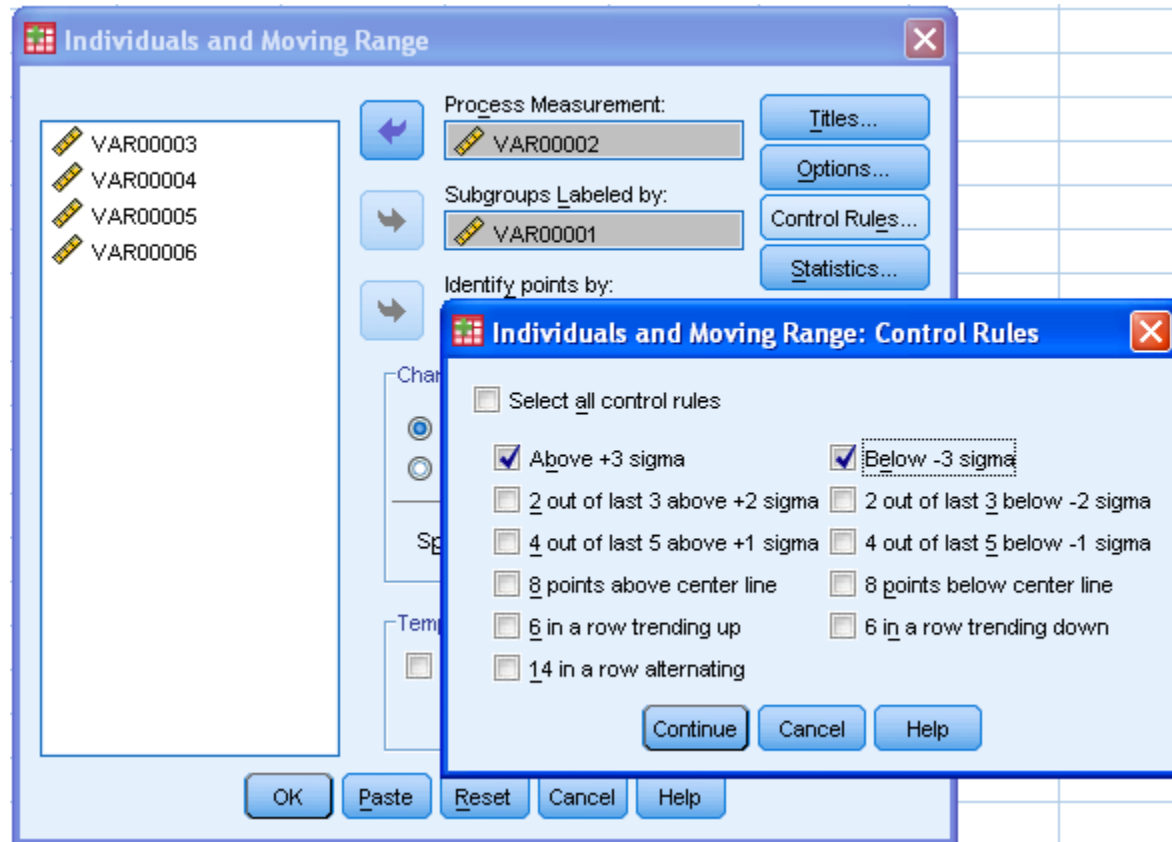
Titles...
Options...
Control Rules...
Statistics...

Individuals and Moving Range: ...

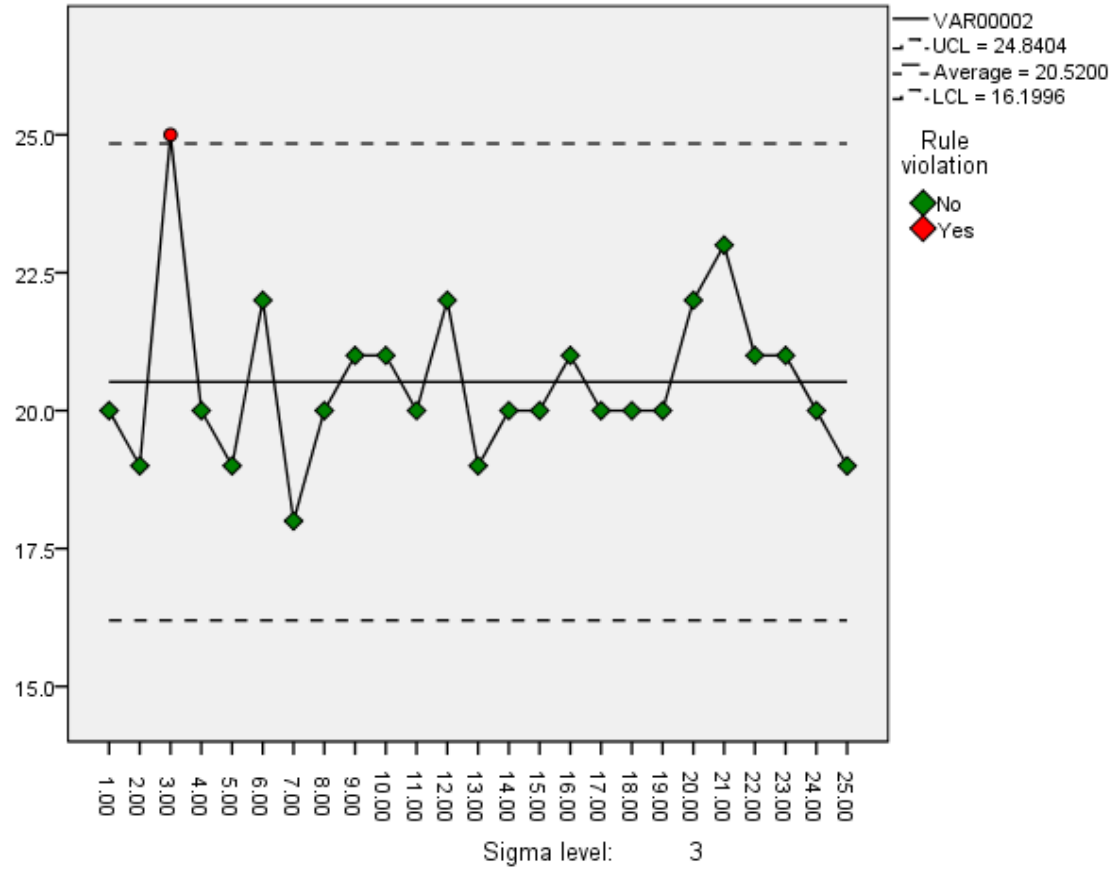
Number of Sigmas: 3

Display subgroups defined by missing values

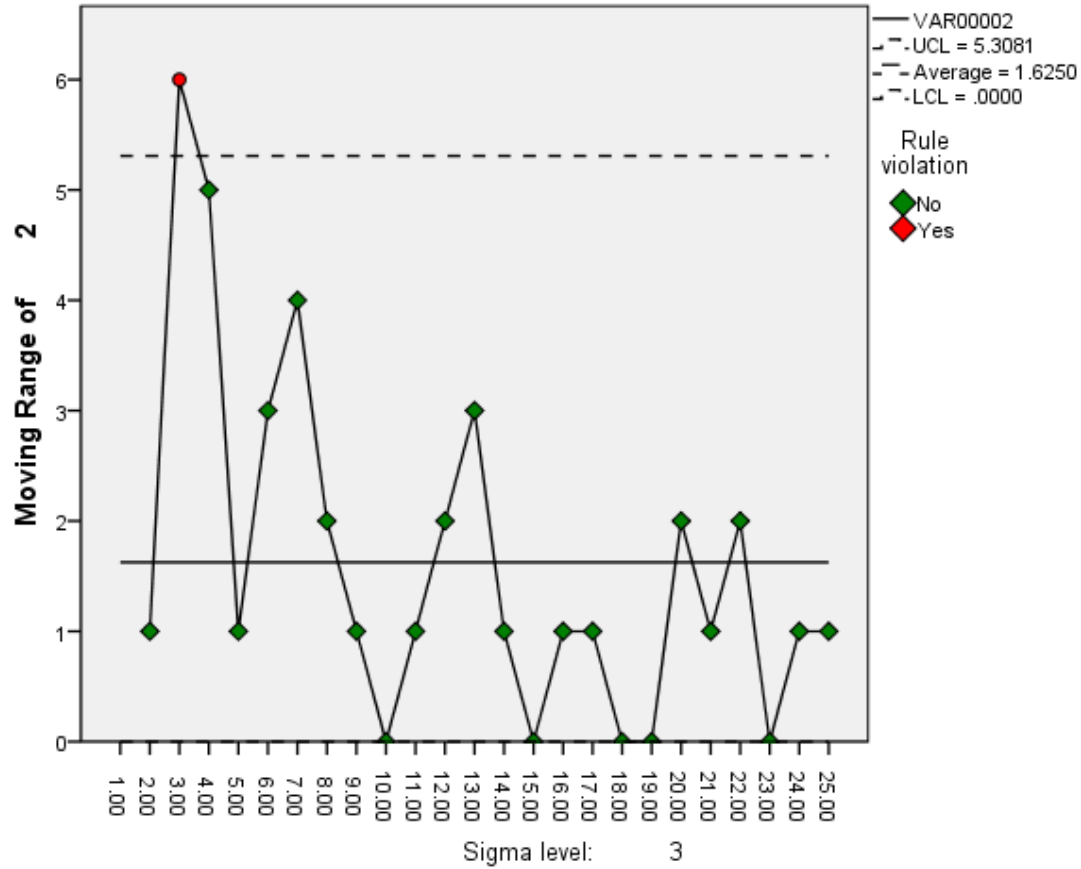
Continue Cancel Help



Control Chart: VAR00002



Control Chart: VAR00002



Rule Violations for Run

VAR00001	Violations for Points
3.00	Greater than +3 sigma

1 points violate control rules.

Rule Violations for MR

VAR00001	Violations for Points
3.00	Greater than +3 sigma

1 points violate control rules.

Remedial actions were taken to rectify this situation.

- ▶ Delete samples necessary and revised the control limits.